



CORT®

PARTY RENTAL

# STYLE & DESIGN GUIDE

[cortpartyrental.com](http://cortpartyrental.com) |      

# GET INSPIRED. SHARE YOUR DESIGNS.

Connect with CORT Party Rental and engage with your peers on Facebook, Instagram, LinkedIn, Pinterest, Twitter and YouTube. Get inspired, learn what's trending, view hot event designs and share your ideas with the event community.

For inspiration and showroom locations, contact one of our Event Specialists at **877.939.RENT** or visit [cortpartyrental.com](http://cortpartyrental.com) to find solutions for your event needs.

CORT<sup>®</sup>

PARTY RENTAL



## CONNECT AND ENGAGE.

STAY CONNECTED

Visit [cortpartyrental.com](http://cortpartyrental.com)

# Table of Contents

View our full product line at [cortpartyrental.com](http://cortpartyrental.com)

- 4 Tabletop Collection**
- 6 China
- 14 Chef & Tasting
- 16 Charger & Service Plates
- 18 Flatware
- 24 Glassware
- 30 Table Accents

- 34 Linen Collection**
- 36 Linens
- 42 Napkins
- 44 Covers & Skirts

- 46 Chair Collection**
- 48 Chameleon Chairs
- 50 Stacking Chairs
- 52 Folding Chairs
- 53 Bar Stools

- Table Collection**
- 54 Sonoma Collection
- 56 Vineyard Collection
- 58 Round Tables
- 59 Rectangle, Square & Curved Tables

- 60 Furniture & Accessories**
- 62 Bars & Back Bars
- 64 Monaco Seating
- 66 Capri, Archer & Briza Seating
- 68 Accent Tables
- 69 Pillows
- 70 Rugs
- 71 Greenery

# 4-30

Dining & Tabletop Accents



# 72-83

Display & Food Service Equipment

- 72 Prep & Service Equipment**
- 74 Beverage
- 75 Serve & Display
- 76 Bowls
- 77 Trays
- 78 Chafing Dishes
- 79 Serving Utensils
- 80 Ovens & Cookers
- 81 Grills & Griddles
- 82 Warming & Transport
- 83 Refrigeration & Sanitation

# 34-56

Linens, Chairs & Tables



# 84-98

Tents, Lighting, Power & Floors



- 84 Tent Collection & Accessories**
- 86 Frame
- 87 Tidewater Sailcloth
- 88 Hi-Peak & Bandshell
- 89 Pole Tension & Clearspan
- 90 Chandeliers
- 92 Light Stands & Strings
- 93 Marquee Letters
- 94 Heating
- 95 Cooling
- 96 Power Distribution
- 98 Floors & Staging

# 60-71

Bars, Seating & Room Accents



# 100-110

Convention & Resource Guides

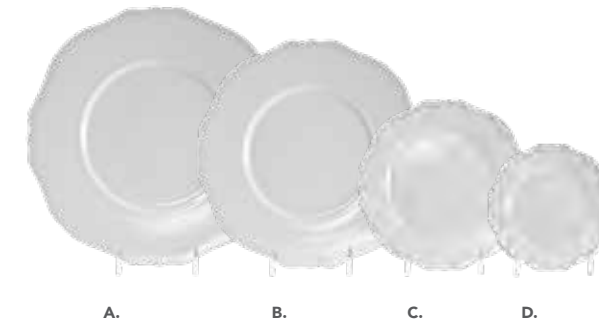


- 100 Convention & Crowd Control**
- 106 Customer Tent Services**
- 108 Linen Resource Guide**
- 109 Floor Resource Guide**
- 110 Tent Resource Guide**

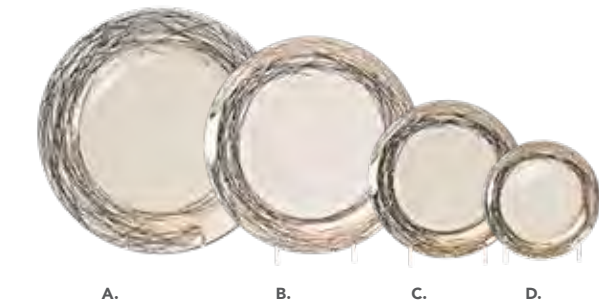


# TABLETOP COLLECTION

**Firenze Pearlized Ivory**  
 A) Dinner Plate 10.75"  
 B) Salad or Dessert Plate 8.5"



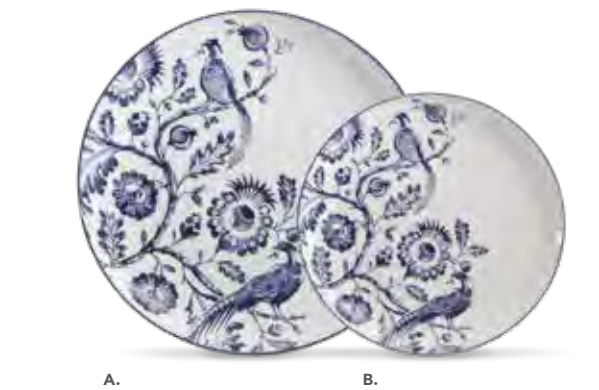
**Contessa Bone China**  
 A) Service or Charger Plate 12"  
 B) Dinner Plate 10.75"  
 C) Salad or Dessert Plate 8"  
 D) Bread & Butter Plate 6.5"



**Nest Bone China**  
 A) Service or Charger Plate 12"  
 B) Dinner Plate 10.5"  
 C) Salad or Dessert Plate 8"  
 D) Bread & Butter Plate 6.25"

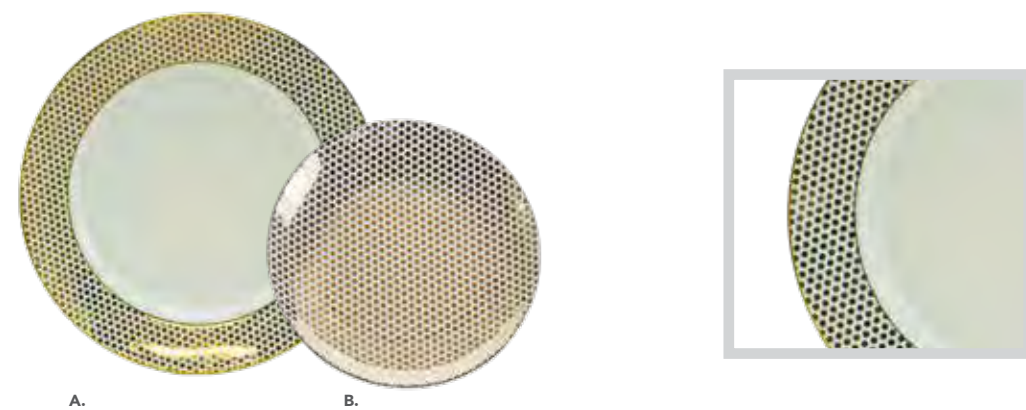
**Jasmine Bone China**  
 A) Dinner Plate 10.5"  
 B) Salad or Dessert Plate 8"

**Fleur**  
 A) Dinner Plate 10.75"  
 B) Salad or Dessert Plate 8"



**Jin Ji Bone China**  
 A) Dinner Plate 10.75"  
 B) Salad or Dessert Plate 8"

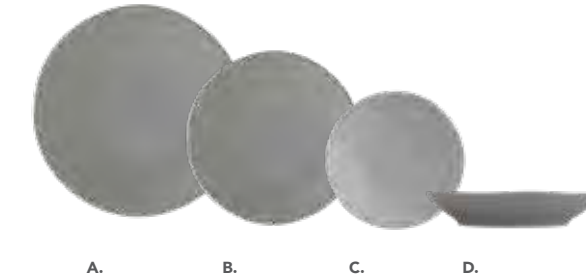
**Dottie**  
 A) Dinner Plate 10.75"  
 B) Salad or Dessert Plate 8"



**Isabella Lace**  
 A) Service or Charger Plate 12.5"  
 B) Dinner Plate 10.75"  
 C) Salad or Dessert Plate 8"  
 D) Bread & Butter Plate 6.25"

**Mia Grey**

- A) Dinner Plate 10.75"
- B) Salad or Dessert Plate 8.5"
- C) Bread & Butter Plate 6.25"

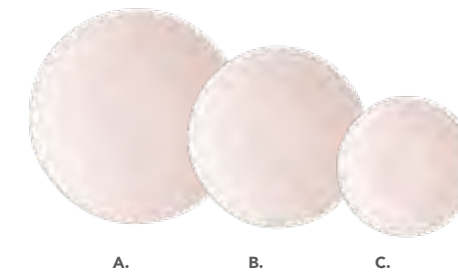
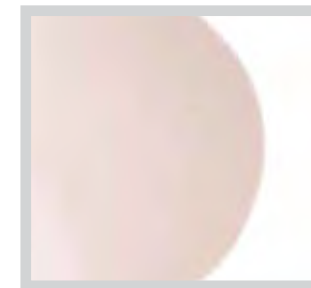


**Ash Stoneware**

- A) Dinner Plate 10.75"
- B) Salad or Dessert Plate 8"
- C) Bread & Butter Plate 6"
- D) Coupe Bowl 9"

**Mia White**

- A) Dinner Plate 10.75"
- B) Salad or Dessert Plate 8.5"
- C) Bread & Butter Plate 6.25"

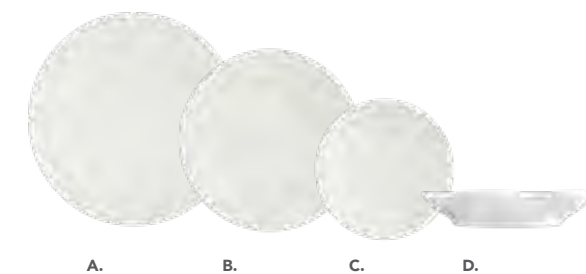


**Blush Stoneware**

- A) Dinner Plate 10.75"
- B) Salad or Dessert Plate 8"
- C) Bread & Butter Plate 6"

**White Grande Coupe**

- A) Dinner Plate 11"
- B) Salad or Dessert Plate 8"
- C) Cereal Bowl 6" 18 oz
- D) Cup 10 oz
- E) Saucer 7"

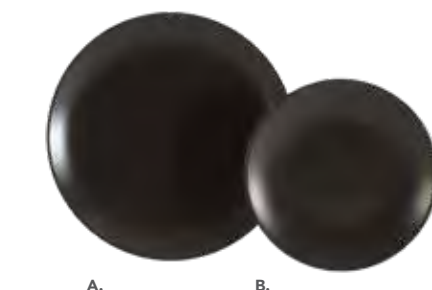
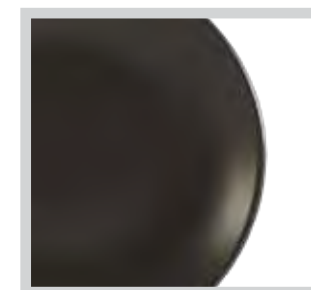


**Linen Stoneware**

- A) Dinner Plate 10.75"
- B) Salad or Dessert Plate 8"
- C) Bread & Butter Plate 6"
- D) Coupe Bowl 9"

**Villa Stoneware**

- A) Dinner Plate 10"
- B) Salad or Dessert Plate 8"
- C) Bread & Butter Plate 6"
- D) Mug 13 oz
- E) Serving Bowl 9.5" 84 oz
- F) Serving Platter Oval 14"



**Slate Stoneware**

- A) Dinner Plate 10.75"
- B) Salad or Dessert Plate 8.25"

- Cream Double Gold Band**  
 A) Service or Charger Plate 12"  
 B) Dinner Plate 10.5"  
 C) Luncheon Plate 9"  
 D) Salad or Dessert Plate 7.5"  
 E) Bread & Butter Plate 6"  
 F) Soup Plate 9" 10 oz  
 G) Cup 8 oz  
 H) Saucer 5.5"  
 I) Creamer 8 oz  
 J) Sugar with Lid 8 oz



- White Triangle**  
 A) Dinner Plate 12"  
 B) Luncheon Plate 10.75"  
 C) Salad or Dessert Plate 7.5"  
 D) Mug 12 oz

- White Gold Rim**  
 A) Service or Charger Plate 12"  
 B) Dinner Plate 10.5"  
 C) Luncheon Plate 9"  
 D) Salad Plate 7.5"  
 E) Bread & Butter Plate 6.5"  
 F) Soup Plate 9" 10 oz  
 G) Cup 8 oz  
 H) Saucer 5.5"



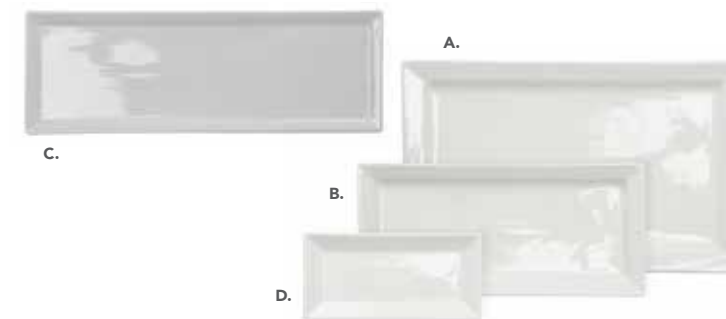
- White Oval**  
 A) Dinner Plate 11"  
 B) Salad or Dessert Plate 8"  
 C) Bread & Butter Plate 7"

- White Platinum Band**  
 A) Dinner Plate 10.5"  
 B) Salad or Dessert Plate 8"  
 C) Bread & Butter Plate 7"  
 D) Cup 8 oz  
 E) Saucer 5.5"



- White Square**  
 A) Service or Charger Plate 12"  
 B) Dinner Plate 10"  
 C) Salad or Dessert Plate 7.5"  
 D) Bread & Butter Plate 6"  
 E) Cup 4 oz  
 F) Saucer / Appetizer Plate 4"  
 Also Available:  
 Serving Bowl 10"

- White Silver Rim**  
 A) Service or Charger Plate 12"  
 B) Dinner Plate 10.5"  
 C) Luncheon Plate 9"  
 D) Salad or Dessert Plate 7.5"  
 E) Bread & Butter Plate 6.5"  
 F) Soup Plate 9" 10 oz  
 G) Cup 8 oz  
 H) Saucer 5.5"



- White Rectangle**  
 A) Platter 17" x 11"  
 B) Platter 7" x 15"  
 C) Plate 5" x 14"  
 D) Plate 4.75" x 9.5"

**White Rim**

- A) Service or Charger Plate 12"
  - B) Dinner Plate 10.5"
  - C) Luncheon Plate 9"
  - D) Salad or Dessert Plate 8"
  - E) Bread & Butter Plate 7"
  - F) Soup Plate 9.25" 8 oz
  - G) Cereal Bowl 6" 12oz
  - H) Footed Bowl 4.5" 9 oz
  - I) Bouillon Cup 8 oz
  - J) Cup 8 oz
  - K) Saucer 6.25"
  - L) Demitasse Cup 4 oz
  - M) Demitasse Plate 5"
  - N) Creamer 8 oz
  - O) Sugar with Lid 8 oz
  - P) Salt & Pepper Set
  - Q) Sauce Boat 16 oz
  - R) Presentation or Pasta Bowl 12" 14 oz
  - S) Family Style Bowl 9" 28 oz
- Also Available:  
Serving Platter Oval 14"\*  
\*See image on page 77



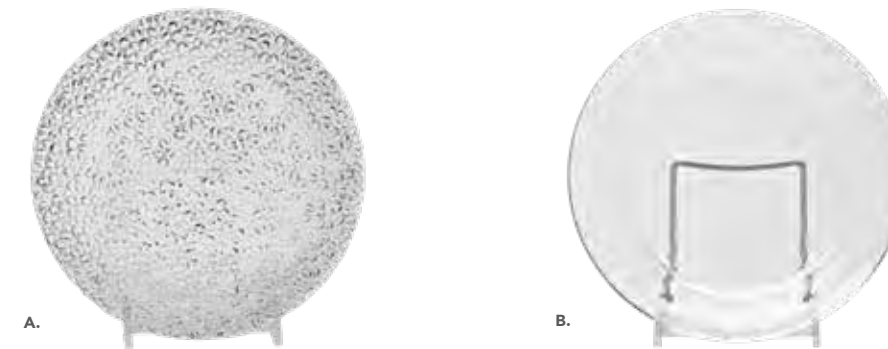
**White Classic Coupe**

- A) Dinner Plate 10.5"
- B) Luncheon Plate 9"
- C) Salad or Dessert Plate 7.5"
- D) Bread & Butter Plate 6.5"
- E) Soup Bowl 9" 16 oz
- F) Cup 7 oz
- G) Saucer 5.75"



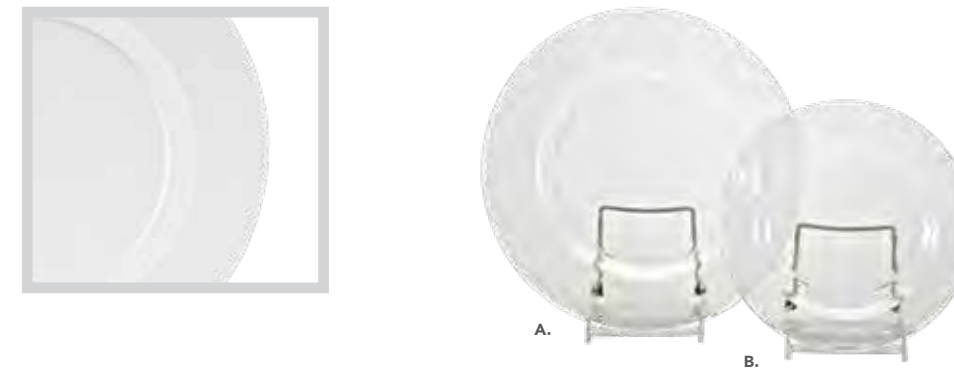
**Zeus Swirl**

- Colors: Amber, Clear & Lime
- A) Dinner 11" (Clear Only)
- B) Salad / Luncheon 9"
- C) Bread & Butter / Salad 6"



**Clear**

- A) Diamonds Plate 8"
- B) Clear Plate 8"



**Hammered**

- A) Dinner Plate 10.75"
- B) Salad or Dessert Plate 8.25"



**Opal**

- A) Dinner Plate 9.5"
- B) Salad or Dessert Plate 7.75"



**Tasting Spoons**

- A) Fishtail White 4"
- B) Wonton White 4"



A.



B.

**Tasting Bowls**

- A) Ava Round 3" 3.2 oz
- B) Ava Round 3.9" 5.3 oz
- C) Ava Round 5" 14.7 oz
- D) Cassolette with Handles 3.75" 8 oz
- E) Footed 4.5" 9 oz
- F) Glass Footed 10 oz
- G) Gondola Bowl 8.25" 5 oz
- H) Gondola Bowl 12.25" 14 oz
- I) Oval Bowl 4 oz
- J) Ramekin Glass 3" 5 oz
- K) Ramekin White 3.5" 4 oz
- L) Square 4" 9 oz
- M) Square 5.5" 17 oz
- N) Sauce Dish 3"
- O) Sauce Dish Divided 3"
- P) Tasting Bowl 4.5" 1.5 oz



A.



B.



C.



D.



E.



F.



G|H.



I.



J.



K.



L.



M.



N.



O.



P.

**Small Plates**  
elevate your  
Presentation

**Tasting Plates**

- A) Black Cassolette with Lid 5"
  - B) Black Mini Fry Pan 5"
  - C) Kyoto Plate 5.75" x 3.5"
  - D) Oval Tray 5"
  - E) Pass Plate Square 7.25"
  - F) Ripple Bowl 6" 3.5 oz
  - G) Saturn Bowl 9"
  - H) Tasting Plate Rectangle 5" x 3"
  - I) Tasting Plate Round 5.5"
  - J) Tasting Plate Square 5"
  - K) Wide Rim Chef Plate 11" 12 oz
- Also Available:  
Tasting Plate Square 4"



A.



B.



C.



D.



E.

Glassware &  
Pass Plate Combo



F.



H.



J.



G.



I.

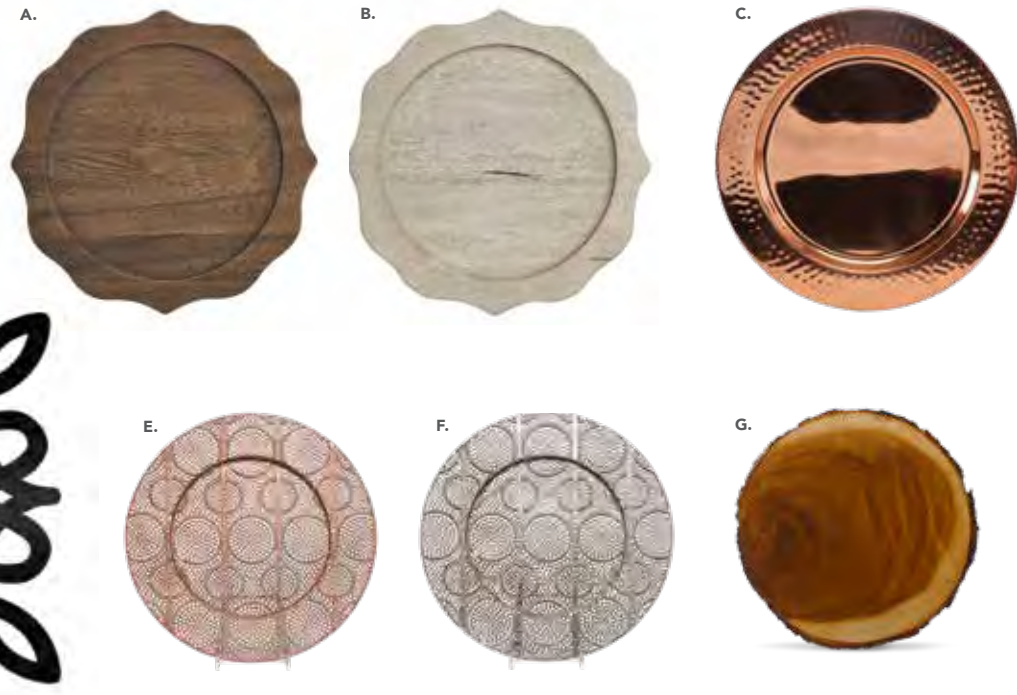


K.

# Charger & Service Plates

## Metal & Wood

- A) Anabel Walnut 13"
- B) Anabel Whitewash 13"
- C) Hammered Copper 13"
- D) Deco Black Metal 13"
- E) Roma Copper 13"
- F) Roma Silver 13"
- G) Slice Wood 11-13"



## Glass

- A) Aria Rose Gold Rim 13"
- B) Beaded Silver 13"
- C) Beaded Gold 13"
- D) Matte Ringed Gold 13"
- E) Matte Ringed Silver 13"
- F) Veneto Gold Rim 12.75"
- G) Veneto Platinum Rim 12.75"



# Charger & Service Plates

## Bone China & Chinaware

- A) Bliss Black with Gold 12.5"
- B) Bliss White with Gold 12.5"
- C) Contessa 12"
- D) Cream Double Gold 12"
- E) Nest 12"
- F) White Gold Rim 12"
- G) White Silver Rim 12"
- H) White Rim 12"
- I) White Square 12"



## Resin & Melamine

- A) Black 13"
- B) Red 13"
- C) Copper 13"
- D) Gold 13"
- E) Silver 13"
- F) Marble 13"



**Medici Coffee**

- A) Salad or Dessert Fork
- B) Dinner Fork
- C) Butter Knife
- D) Dinner Knife
- E) Soup Spoon
- F) Teaspoon



**Uptown White Brushed Gold**

- A) Salad or Dessert Fork
- B) Dinner Fork
- C) Butter Knife
- D) Dinner Knife
- E) Soup Spoon
- F) Teaspoon

**Medici Pearl**

- A) Salad or Dessert Fork
- B) Dinner Fork
- C) Butter Knife
- D) Dinner Knife
- E) Soup Spoon
- F) Teaspoon



**Uptown White Brushed Silver**

- A) Salad or Dessert Fork
- B) Dinner Fork
- C) Butter Knife
- D) Dinner Knife
- E) Soup Spoon
- F) Teaspoon

**Uptown Black Brushed Gold**

- A) Salad or Dessert Fork
- B) Dinner Fork
- C) Butter Knife
- D) Dinner Knife
- E) Soup Spoon
- F) Teaspoon



**Uptown Black Brushed Silver**

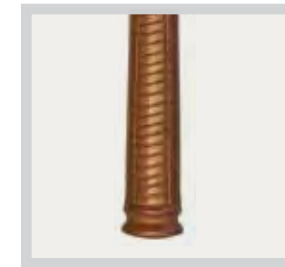
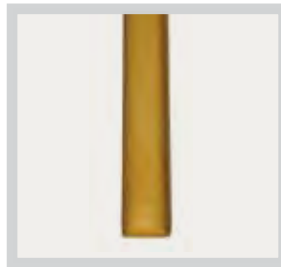
- A) Salad or Dessert Fork
- B) Dinner Fork
- C) Butter Knife
- D) Dinner Knife
- E) Soup Spoon
- F) Teaspoon

**Urban Gold**

- A) Salad or Dessert Fork
- B) Dinner Fork
- C) Butter Knife
- D) Dinner Knife
- E) Teaspoon



A. B. C. D. E.



A. B. C. D. E. F.

**Vivi Rose Gold**

- A) Salad or Dessert Fork
- B) Dinner Fork
- C) Butter Knife
- D) Dinner Knife
- E) Soup Spoon
- F) Teaspoon

**Urban Slate**

- A) Salad or Dessert Fork
- B) Dinner Fork
- C) Butter Knife
- D) Dinner Knife
- E) Teaspoon



A. B. C. D. E.



A. B. C. D. E. F. G. H. I.

**Pantheon**

- A) Appetizer / Cocktail Fork
- B) Salad or Dessert Fork
- C) Dinner Fork
- D) Butter Knife
- E) Dinner Steak Knife
- F) Standing Table Knife
- G) Soup Spoon
- H) Teaspoon
- I) Demitasse Spoon

**Silhouette Silver Plated**

- A) Gravy Ladle
- B) Serving Spoon
- C) Demitasse Spoon, Small
- D) Demitasse Spoon, Large
- E) Bouillon Spoon
- F) Teaspoon
- G) Dessert Spoon
- H) Ice Tea Spoon
- I) Dinner Knife
- J) Butter Knife
- K) Dinner Fork
- L) Dinner Fork
- M) Salad or Dessert Fork
- N) Cocktail Fork



A. B. C. D. E. F. G. H. I. J. K. L. M. N.



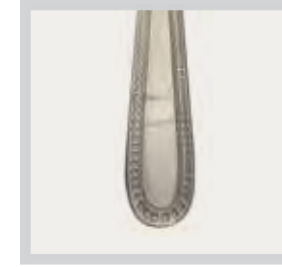
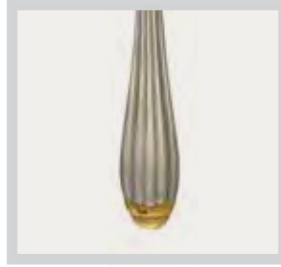
A. B. C. D. E. F. G. H. I.

**Savoy Gold**

- A) Serving Fork
- B) Serving Spoon
- C) Salad or Dessert Fork
- D) Dinner Fork
- E) Butter Knife
- F) Dinner Knife
- G) Soup Spoon
- H) Bouillon Spoon
- I) Teaspoon

**Parisian Gold**

- A) Salad or Dessert Fork
- B) Dinner Fork
- C) Butter Knife
- D) Dinner Knife
- E) Teaspoon

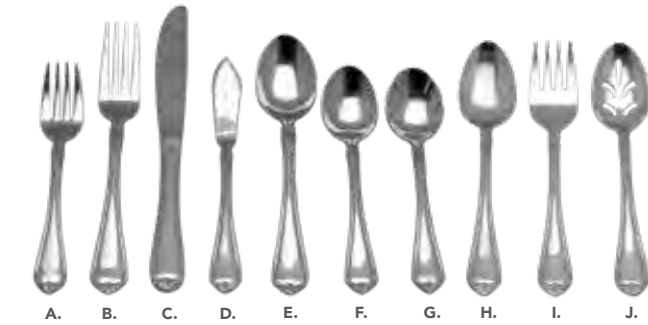


**Caviar**

- A) Serving Fork
- B) Serving Spoon
- C) Appetizer / Cocktail Fork
- D) Fish Fork
- E) Salad or Dessert Fork
- F) Dinner Fork
- G) Butter Knife
- H) Fish Knife
- I) Dinner Knife
- J) Ice Tea Spoon
- K) Soup Spoon
- L) Bouillon Spoon
- M) Teaspoon
- N) Espresso Spoon

**Hammered Antique**

- A) Salad or Dessert Fork
- B) Dinner Fork
- C) Dinner Knife
- D) Soup Spoon
- E) Teaspoon



**Solange**

- A) Salad or Dessert Fork
- B) Dinner Fork
- C) Dinner Knife
- D) Butter Knife
- E) Soup Spoon
- F) Teaspoon
- G) Sugar Spoon
- H) Serving Fork
- I) Serving Fork
- J) Serving Spoon Slotted

**Dragonfly**

- A) Salad or Dessert Fork
- B) Dinner Fork
- C) Dinner Knife
- D) Teaspoon



- A) Kai Stainless
- B) Prime Steel
- C) Deluxe Stainless
- D) Wood Handle
- E) Pantheon
- F) Lucca Faceted

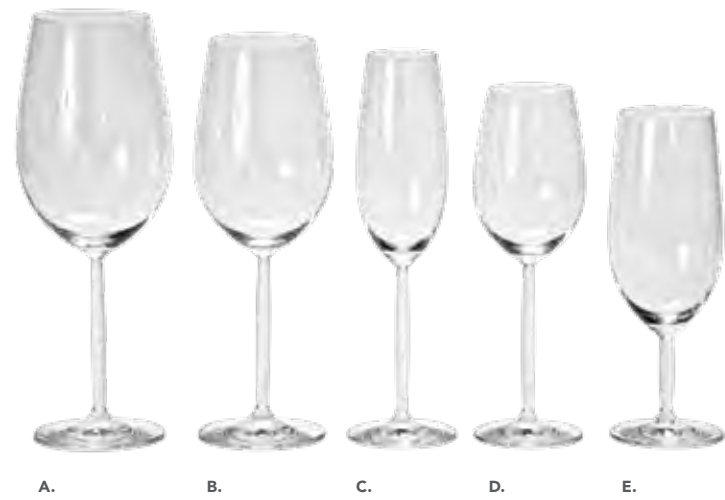
**Lucca Faceted**

- A) Appetizer / Cocktail Fork
- B) Salad or Dessert Fork
- C) Dinner Fork
- D) Butter Knife
- E) Steak Knife
- F) Dinner Knife
- G) Ice Tea Spoon
- H) Soup Spoon
- I) Bouillon Spoon
- J) Teaspoon
- K) Demitasse Spoon



**Steak Knife Collection**

- Diva Collection**  
 A) Wine Goblet 26 oz  
 B) Wine Bordeaux 20 oz  
 C) Champagne Flute 7 oz  
 D) Wine 10 oz  
 E) AP, Water or Beer 14 oz



- Platinum Rim Collection**  
 A) Champagne Flute 7 oz  
 B) Wine 13 oz  
 C) Wine 10 oz  
 D) AP, Water or Beer 15 oz

- Riedel Collection**  
 A) Pinot 24 oz  
 B) Red Wine 21.5 oz  
 C) Champagne Flute 8.5 oz  
 D) White or Red Wine 12.5 oz  
 E) AP, Water or Beer 17.5 oz



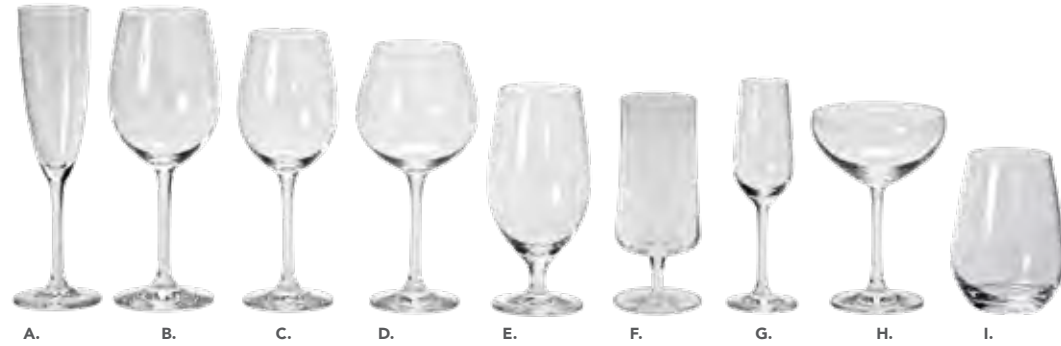
- Gold Rim Collection**  
 A) Champagne Flute 7 oz  
 B) Wine 13 oz  
 C) Wine 10 oz  
 D) AP, Water or Beer 15 oz

- Cut Crystal Collection**  
 A) Venetian Wine 10 oz  
 B) Venetian Champagne 7 oz  
 C) Royal Coupe 8 oz  
 D) Venetian Beverage 15 oz  
 E) Venetian Old Fashioned 12 oz  
 F) Royal Old Fashioned 11 oz



- Pure Collection**  
 A) Champagne Flute 7 oz  
 B) Red Wine 18 oz  
 C) White Wine 13 oz  
 D) AP, Water or Beer 15 oz  
 E) Long Drink 18 oz  
 F) Stemless Champagne Flute 8 oz  
 G) Shot Tasting Glass 3 oz  
 H) Whiskey Stemless 13 oz  
 I) Rocks 10 oz

- Estate Fine Collection**  
 A) Champagne Flute 7 oz  
 B) Wine 18 oz  
 C) Wine 13 oz  
 D) Wine Bolla 18 oz  
 E) AP, Water or Beer 17 oz  
 F) Beer Stemmed 13.5 oz  
 G) Port or Sherry 4 oz  
 H) Cocktail or Champagne 9.5 oz  
 I) AP, Water or Wine Stemless 19 oz



- Ariana Goblet**  
 A) White 16 oz  
 B) Black 16 oz

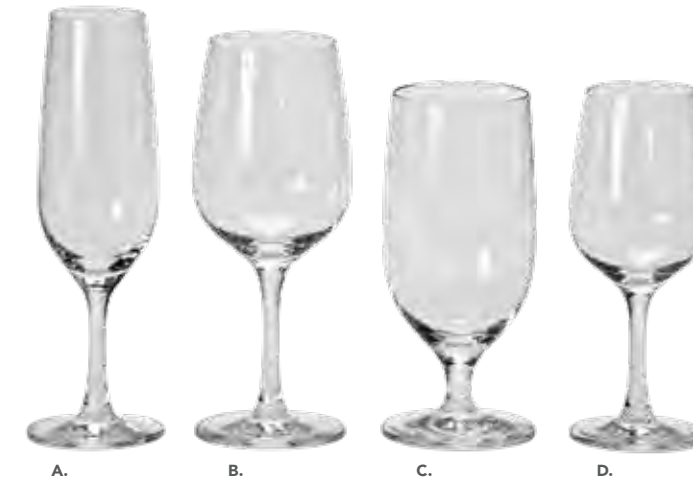


- Jupiter Glass**  
 A) Fern 10 oz  
 B) Fern 13 oz  
 C) Clear 10 oz  
 D) Clear 13 oz  
 E) Cornflower 10 oz  
 F) Cornflower 13 oz  
 G) Rose 10 oz  
 H) Rose 13 oz



Add a touch of **Color**

- Valore Collection**  
 A) Champagne Flute 8 oz  
 B) Wine 12 oz  
 C) AP, Water or Beer 13 oz  
 D) Wine 8 oz



- Teardrop Collection**  
 A) Champagne Flute 6 oz  
 B) AP, Water or Beer 15 oz  
 C) Wine Goblet 12 oz  
 D) Wine 8.5 oz  
 E) Wine 6.5 oz



- Beer Collection**  
 A) Crystal Beer Stemmed 13.5 oz  
 B) Pub Pilsner 16 oz  
 C) Pilsner 12 oz  
 D) Beer Mug 12 oz  
 E) Pint 16 oz  
 F) Mini Pint 8 oz  
 G) Mini Beer Tasting 5 oz



## Traditional Glassware

- A) Brandy Snifter 12 oz
- B) Champagne Saucer 5.5 oz
- C) Champagne Flute 6 oz
- D) Punch Cup 6 oz
- E) Copper Mug 16 oz
- F) Irish Coffee 8 oz
- G) Old Fashioned 8 oz
- H) Old Fashioned Double 13 oz
- I) Highball 5 oz
- J) Highball 9 oz
- K) Tumbler 12 oz
- L) Chimney Glass 12 oz
- M) Rocks Footed 7 oz
- N) Cosmopolitan 8.25 oz
- O) Up Glass 4.5 oz
- P) Martini 4.5 oz
- Q) Martini 6 oz
- R) Martini 9.25 oz
- S) Margarita 9 oz
- T) Stemless Red Wine 16.5 oz
- U) Stemless White Wine 17 oz
- V) Mason Jar 16 oz



## Tasting Beverage

- A) Classic Shot Glass 1.5 oz
- B) Cordial Non-Stemmed 2 oz
- C) Demitasse Cup 3 oz & Saucer 4.5"
- D) Espresso Shot Glass 3.7 oz
- E) Flare Shot Taster 2.5 oz
- F) Jigger Shot Glass 3 oz
- G) Mini Beer Glass 5 oz
- H) Mini Copper Mug 2 oz
- I) Mini Pint Glass 8 oz
- J) Pure Shot Tasting Glass 3 oz
- K) Roly Poly 4.75 oz
- L) Sake Dipping Cup 2 oz
- M) Sake Bottle 9 oz
- N) Square Shot Glass 2.25 oz
- O) Tini Martini Glass 2 oz
- P) Whiskey Tasting Glass Crystal 6 oz

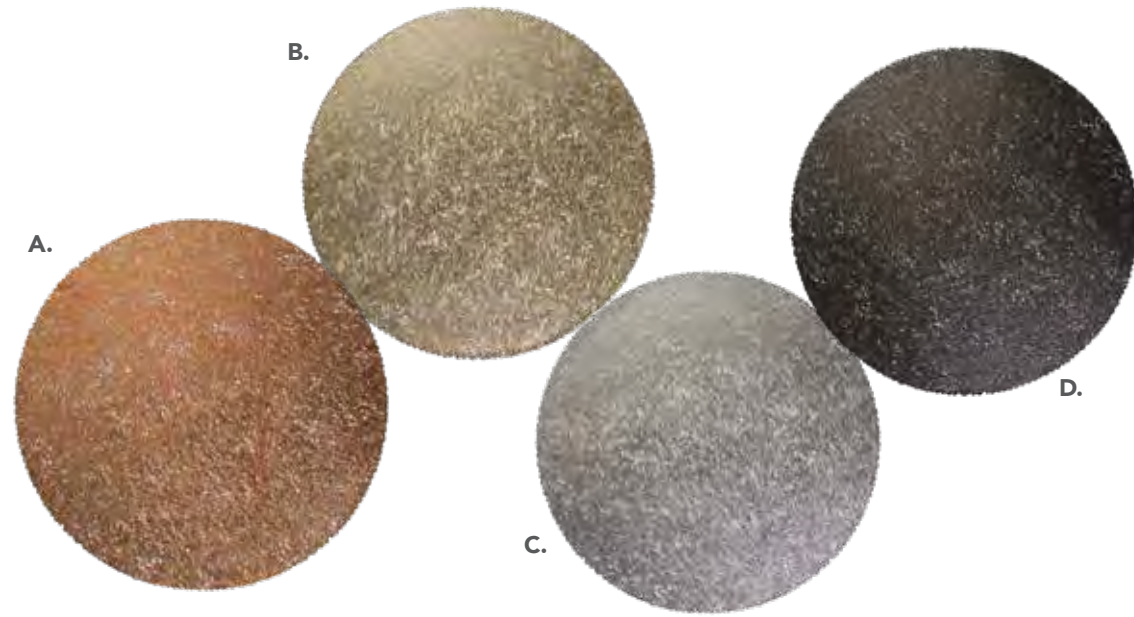


Blue Rose Photography |  
Ravishing Radish Catering



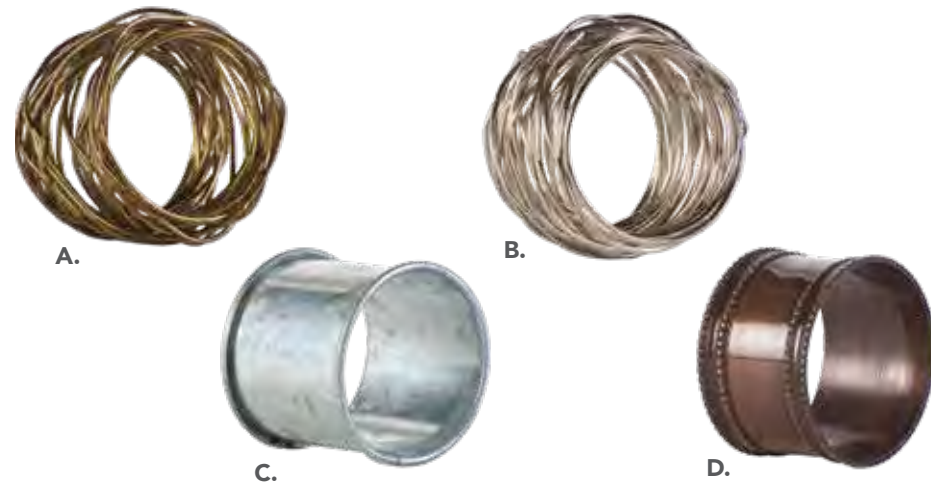
**Placemats**

- A) Aura Copper 15"
- B) Aura Gold 15"
- C) Aura Nickel 15"
- D) Aura Pewter 15"



**Napkin Rings**

- A) Nest Gold
- B) Nest Silver
- C) Galvanized Silver
- D) Antique Copper



**Candle Holders Metal**

- A) Gold 3"
- B) Gold 3.75"
- C) Black / Gold 3.5" x 3.5"
- D) Black / Gold 5" x 5"
- E) Black / Gold 8" x 8"



**Candle Holders**

- Metallic Glass**
- A) Alpine Cylinder 3.5"
  - B) Alpine Round 3.5"
  - C) Antique Gold 3.5"
  - D) Blush Lines 3.5"
  - E) Blush / Gold 4.5"
  - F) Rose Gold Diamonds 4"
  - G) Rose Gold Lines 3"
  - H) Silver Mercury Cup 3.25"
  - I) Silver Mercury Round 3"
  - J) Silver Mercury with Base 3.5"
  - K) Smoke Diamonds Large 3"
  - L) Smoke Diamonds Raised 2.75"



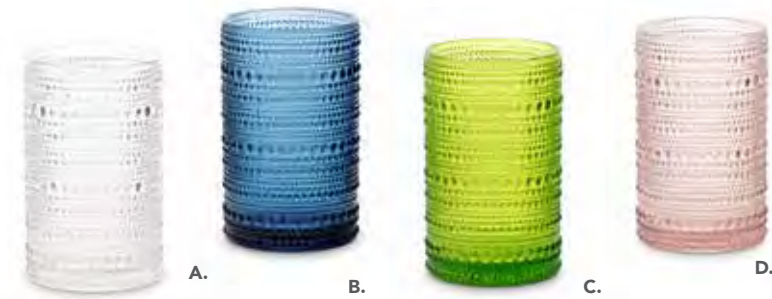
**Candle Holders Clear Glass**

- A) Cracked 2.5"
- B) Roly Poly 2.5"
- C) Square Cube 2.5"



**Candle Holders Jupiter Glass**

- A) Clear 3.75" & 5"
- B) Cornflower 3.75" & 5"
- C) Fern 3.75" & 5"
- D) Rose 3.75" & 5"



**Lanterns**

- A) 24" x 8"
- B) 31" x 8"

**Founder Gold**

- C) 14" x 5.5"
- D) 18" x 5.5"

**Rattan**

- E) 16.5"h x 11.5"
  - F) 23.75"h x 15.5"
- \*Indoor Use Only



Mix & Match  
**Table Accents**  
to enhance  
your Design

**Metallic Stands & Vases**

- A) Gold Planter 9.5" x 4"
  - B) Gold Planter 12" x 5"
  - C) Gold Stand 24" x 19.75"
  - D) Gold Stand 31" x 19.75"
- \*Indoor Use Only



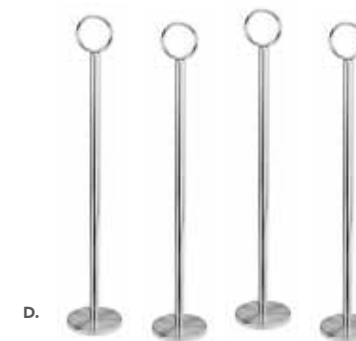
**Aluminum Pedestal Tray**

- A) 14.5" x 5.25" x 4.75"
  - B) 22" x 7" x 5.25"
- \*Décor Only / Not Food Safe



**Glass Vases**

- A) Mason 7.5"
- B) Mason 11.25"
- C) Cylinder 5"
- D) Cylinder 12"
- E) Cylinder 19"

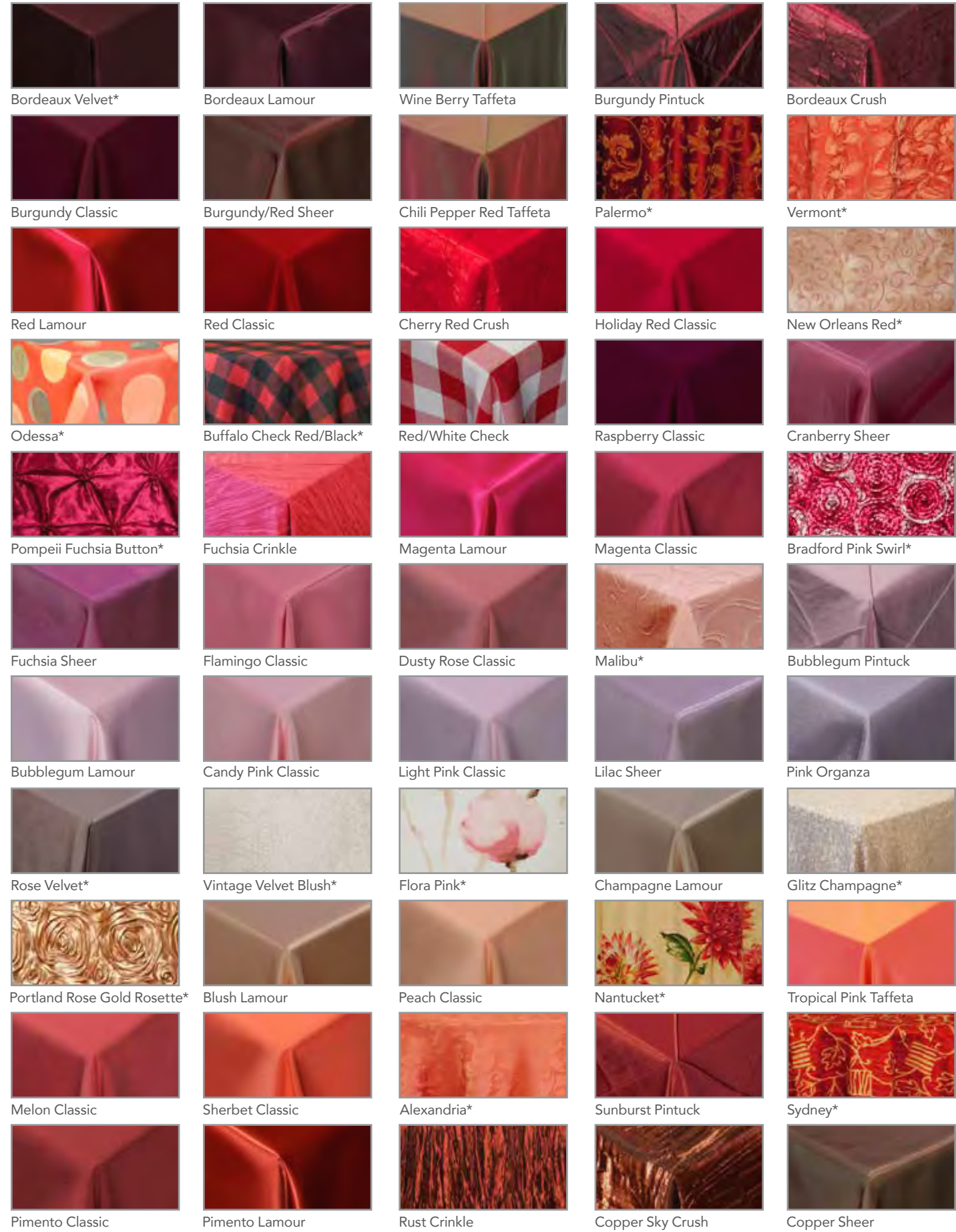


**Miscellaneous**

- A) Round Mirror 12-14"
  - B) Selenite Table Number Holder
  - C) Table Number Stand 12"
  - D) Table Number Stand 18"
- Also Available:  
Table Number Cards

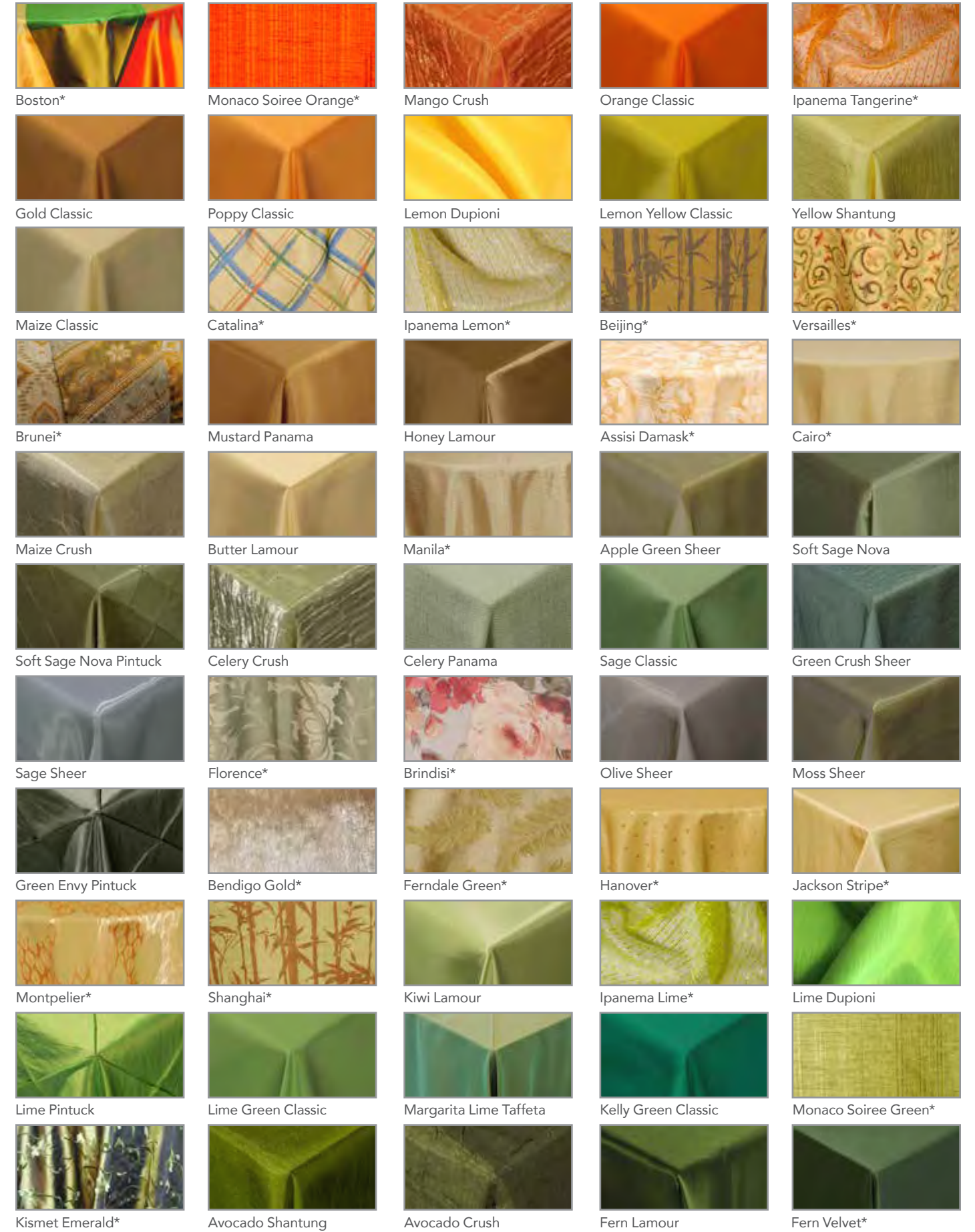
# LINEN & NAPKIN COLLECTION

# Linen Collection



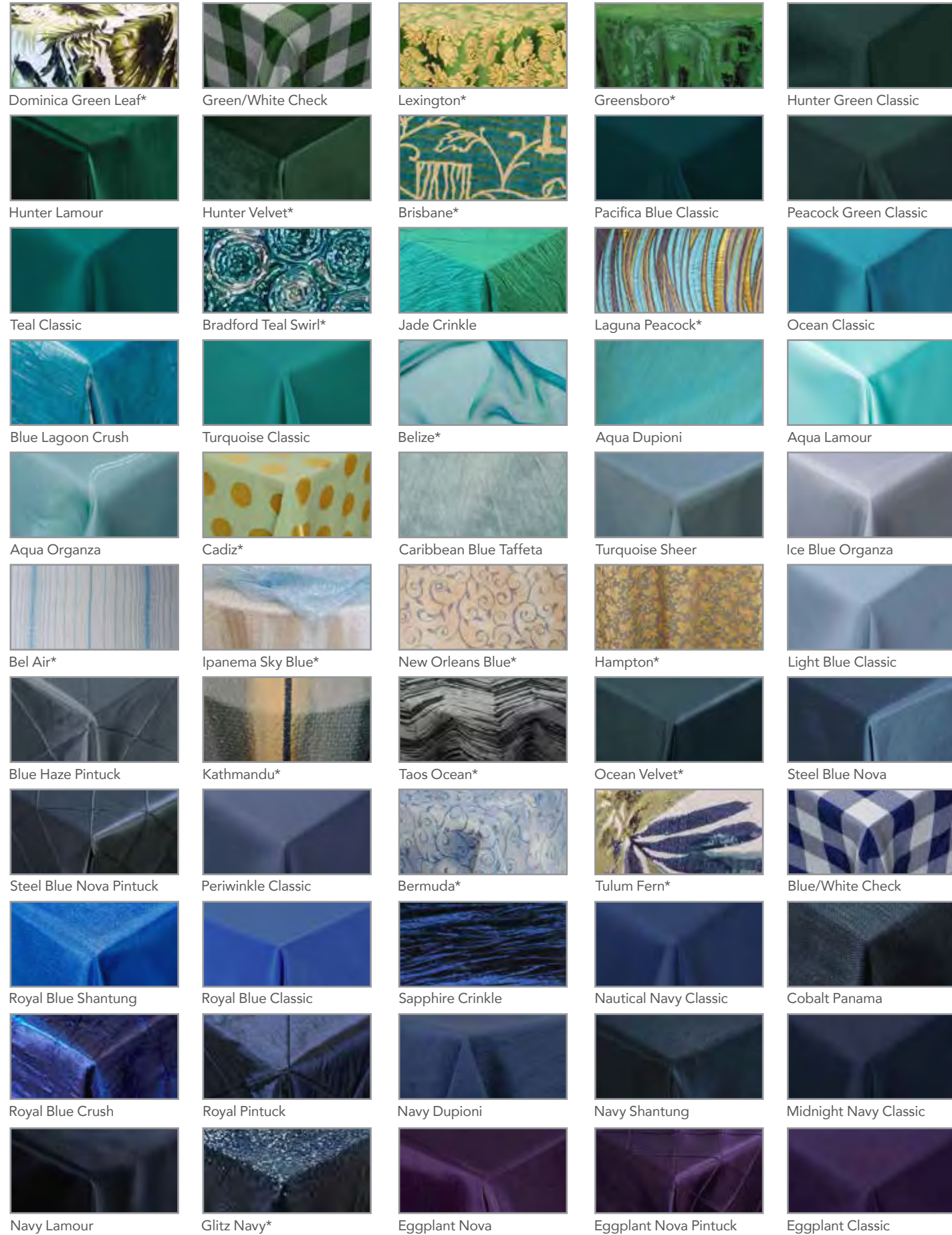
\*Choice Linen Specialty Fabrics

# Linen Collection



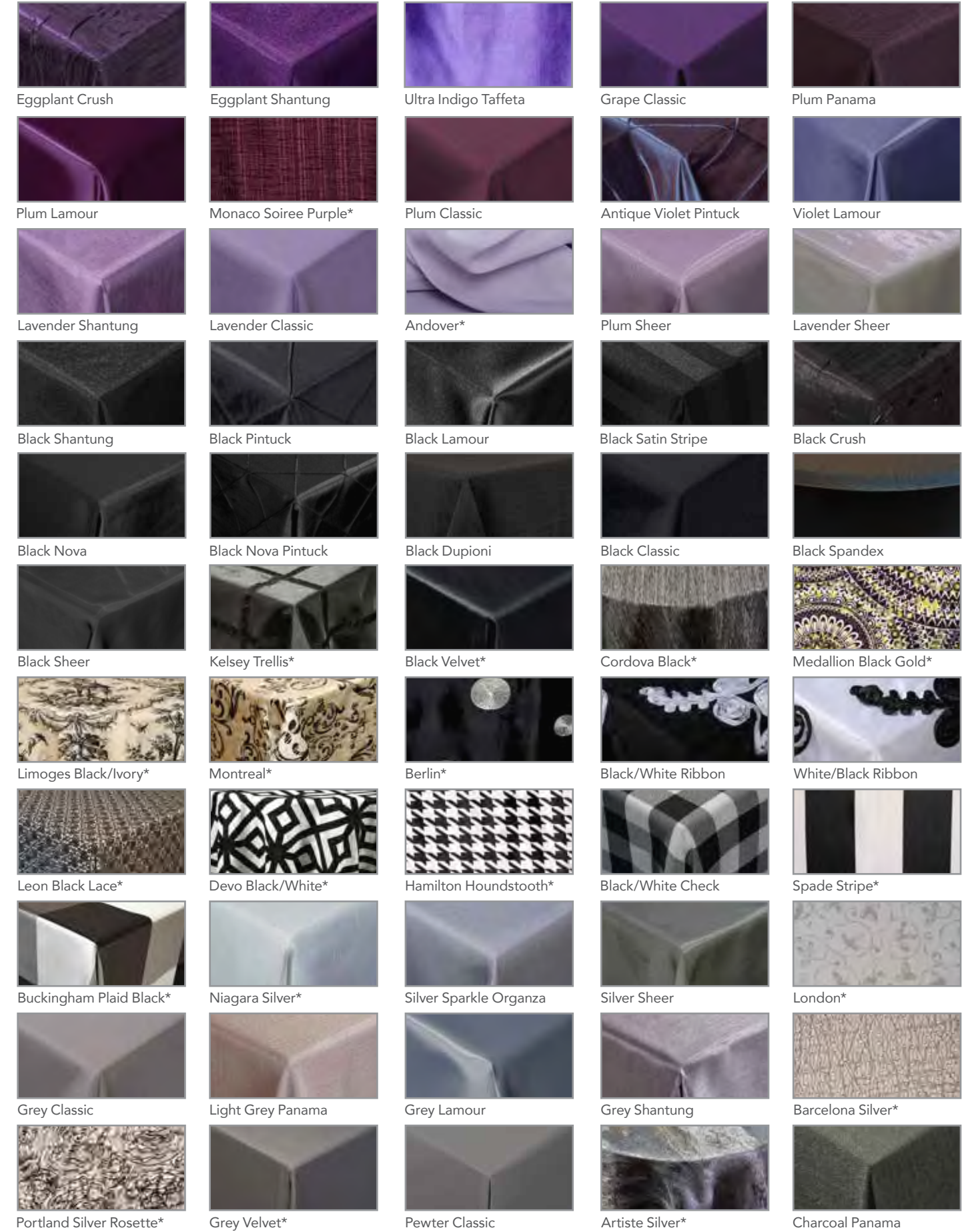
cortpartyrental.com | 37

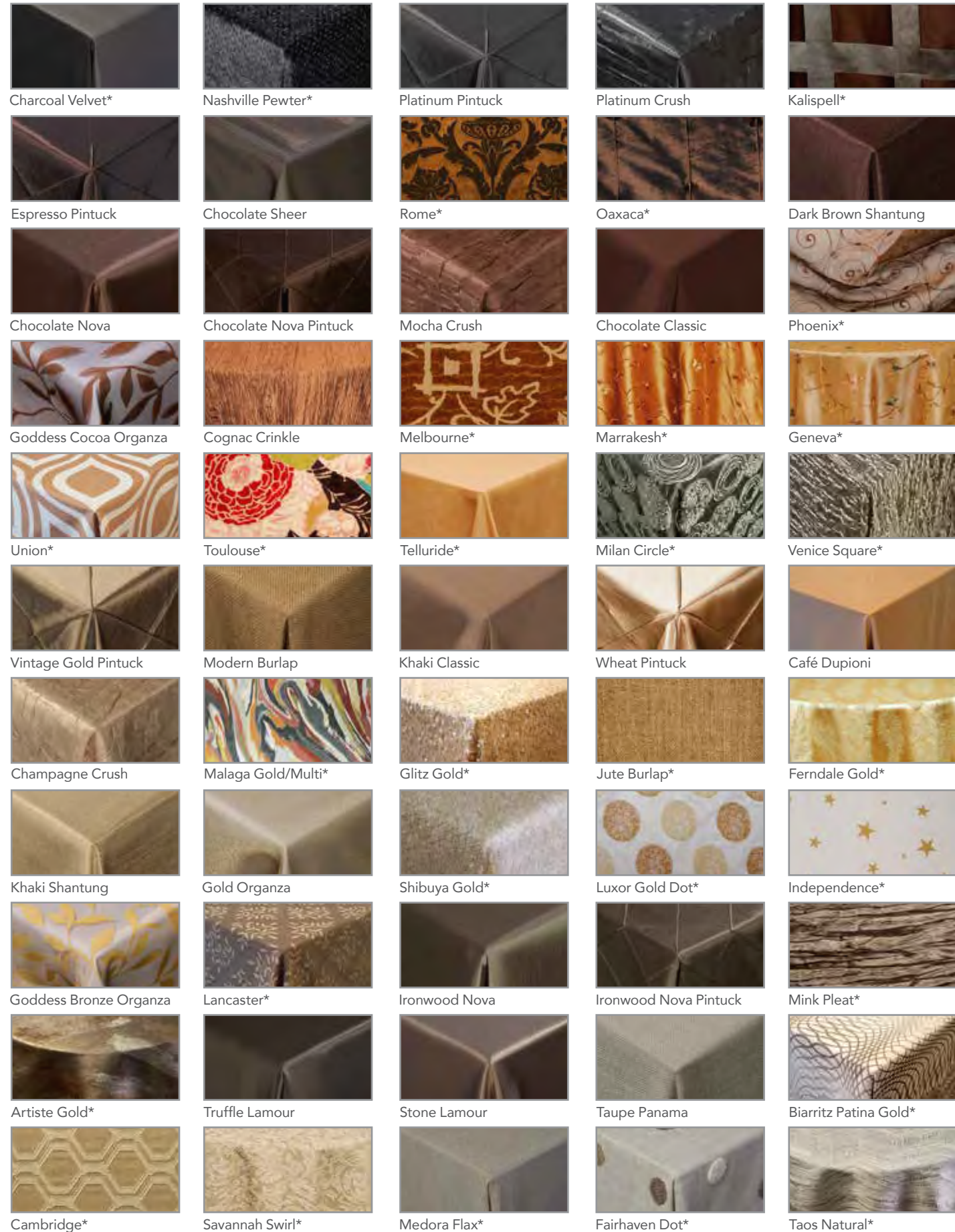
# Linen Collection



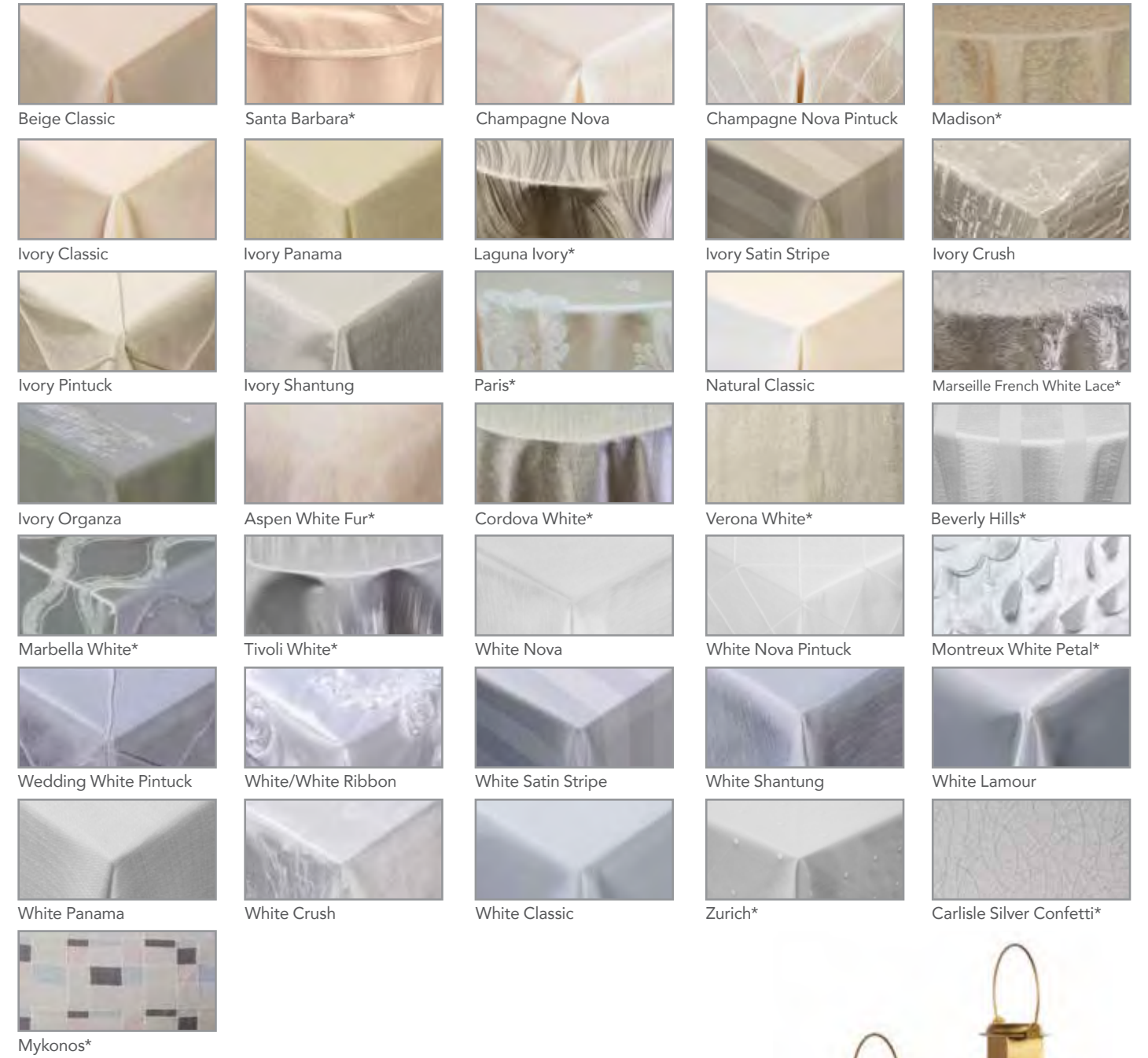
\*Choice Linen Specialty Fabrics

# Linen Collection

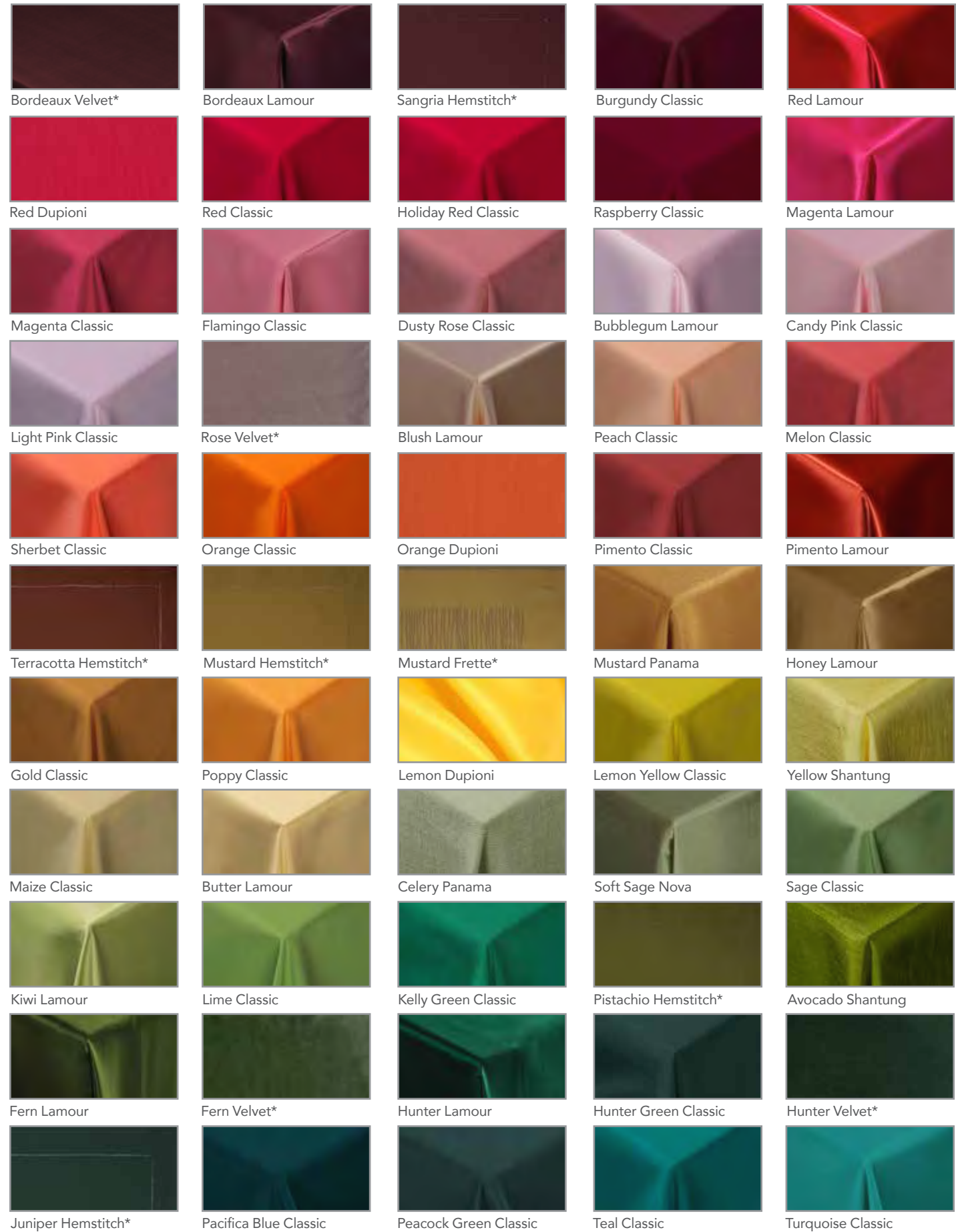




\*Choice Linen Specialty Fabrics

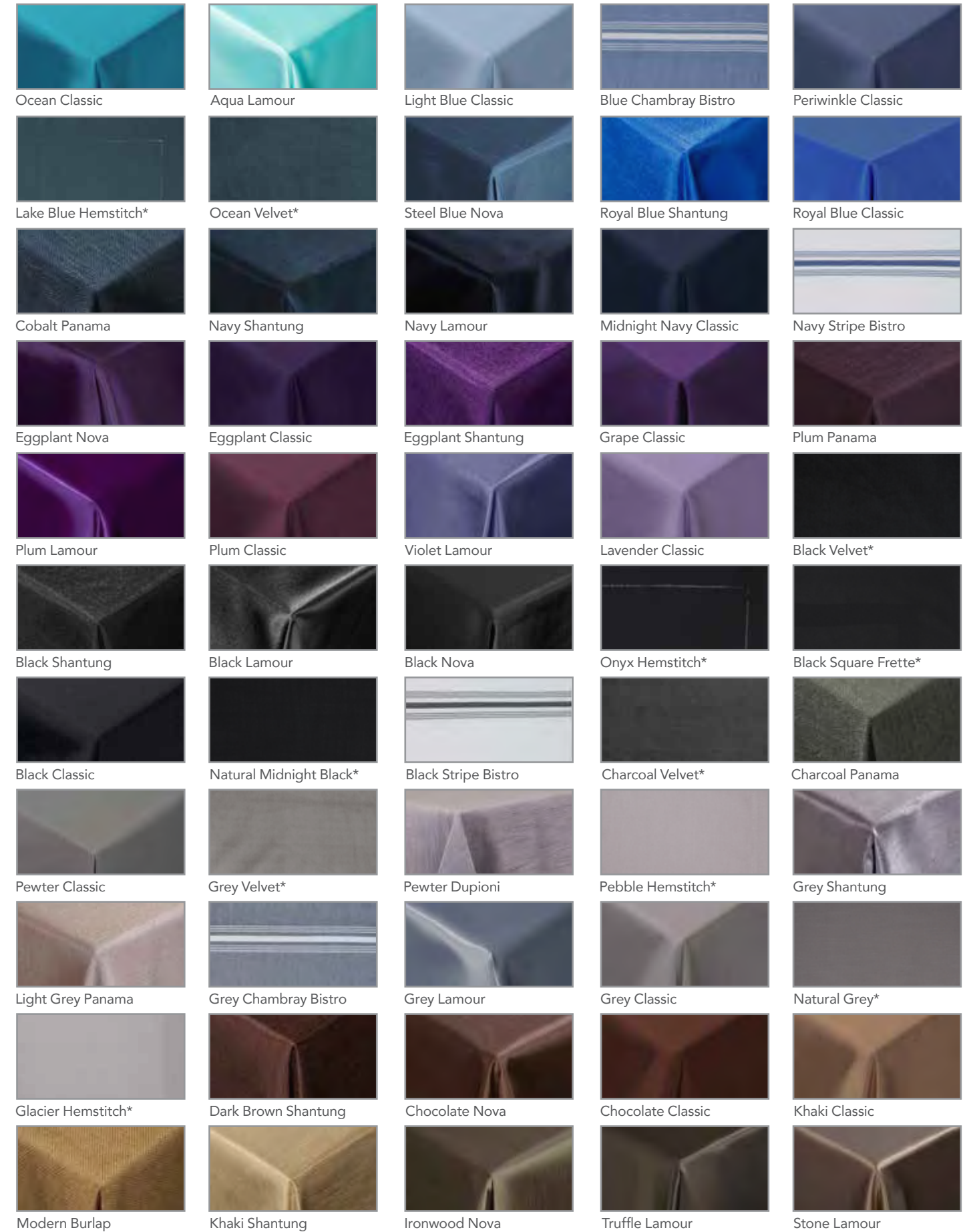


# Napkin Collection

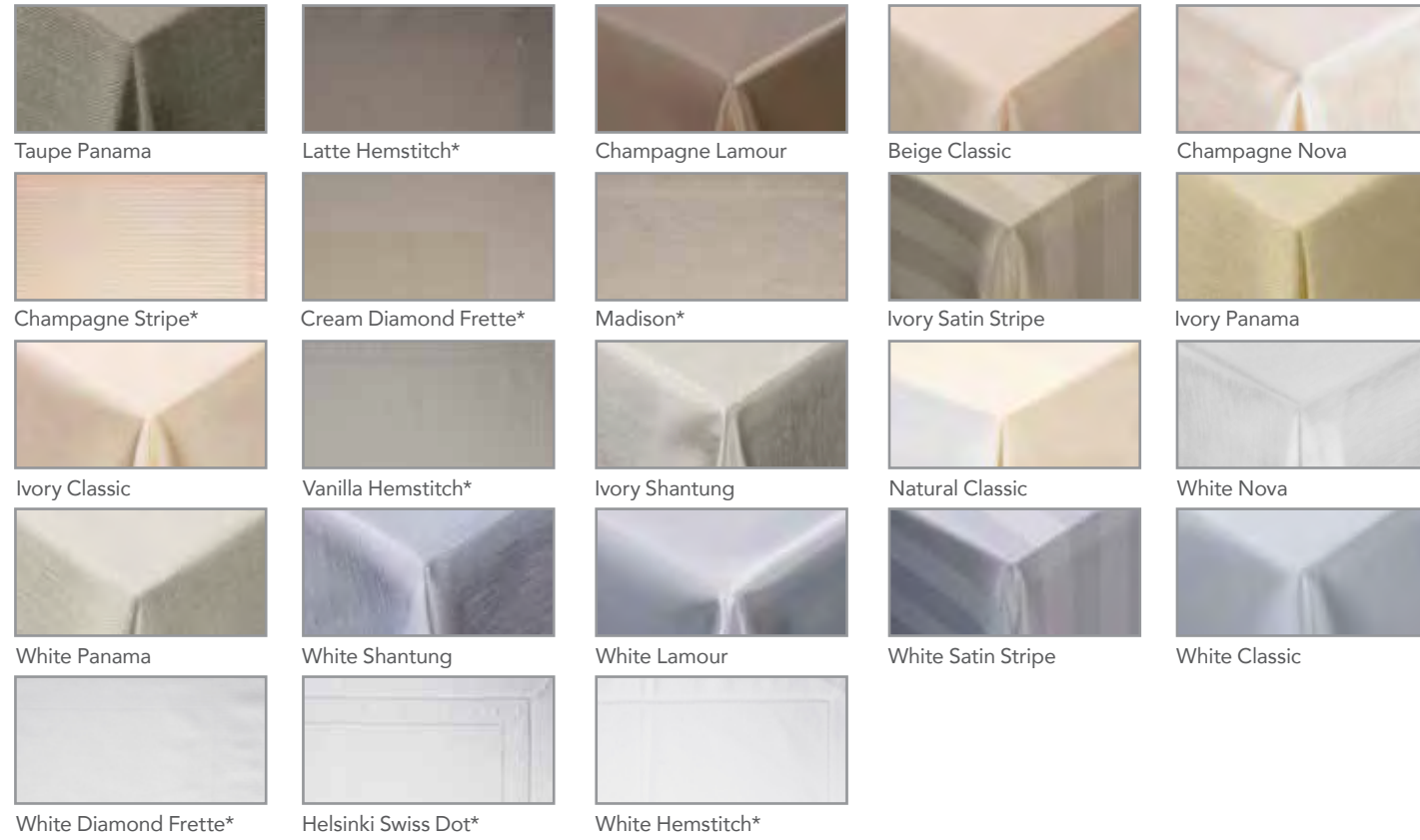


\*Choice Linen Specialty Fabrics

# Napkin Collection



# Napkin Collection



# Table Pads Covers & Skirts

**A) Table Pads Fitted**  
**Round**  
 30", 48", 60" & 72"  
**Banquet**  
 6' x 30", 8' x 30" & 8' x 40"

**B) Vinyl Heavy Duty**  
**Table Covers**  
 30" x 42" Cocktail  
 6' x 18" Rectangle  
 6' x 30" Banquet  
 8' x 30" Banquet  
 48" Round

**C) Skirting Shirred Pleat**  
**with Velcro**  
 Classic Solid 8'6", 13'6" & 21'6"  
 Tradeshow Fabric 14'  
 Multiple Heights  
 Clips Required



A.



B.



C.







# CHAIR & TABLE COLLECTION

**Chameleon Fanfare Silver**

**Stretch Knit Cushion Caps**

- A) Black
- B) Cranberry
- C) Gold
- D) Ivory
- E) Navy
- F) Red
- G) Silver
- H) Toffee
- I) White
- J) Zebra



**Velvet Cushion Caps**

- A) Deep Purple
- B) Gold
- C) Olive
- D) Red



**Chloe Stretch Knit Covers**

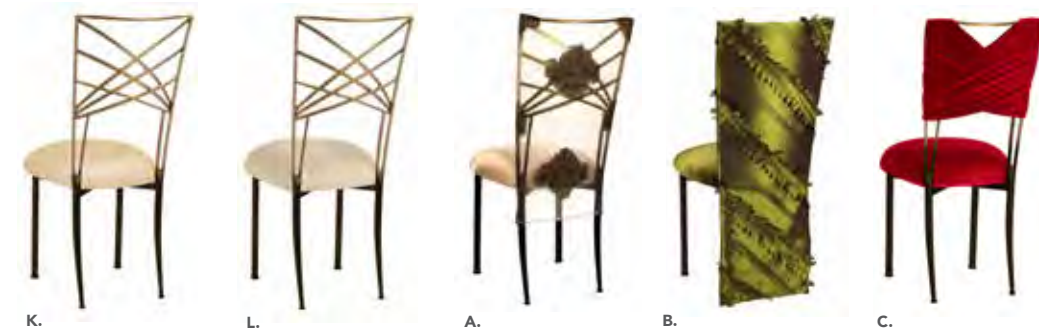
- A) Black with Cushion
- B) Gold with Cushion
- C) Ivory with Cushion
- D) Ivory with Cushion, Skirt & Jewel Band
- E) Red with Cushion
- F) White with Cushion
- G) White with Cushion, Skirt & Jewel Band



**Chameleon Fanfare Two Tone**

**Suede Cushion Caps**

- A) Black
- B) Camel
- C) Charcoal
- D) Chocolate
- E) Copper
- F) Ice Blue
- G) Ivory
- H) Lilac
- I) Navy
- J) White



**Specialty Cushion Caps**

- K) Dupioni Champagne Boxed
- L) Parchment Boxed

**Specialty Covers**

- A) Organza Medallion with Toffee Cushion
- B) Olive Taffeta Petals with Olive Velvet Cushion
- C) Red Sweetheart with Red Velvet Cushion
- D) Deep Purple Velvet with Cushion
- E) Gold Velvet Cowl Neck with Skirt & Cushion
- F) Parchment with Cushion
- G) Parchment with Skirt & Cushion



**Suede Covers**

- A) Black with Cushion
- B) Charcoal with Cushion
- C) Chocolate with Cushion
- D) White with Cushion



**Stacking Chairs**

- A) Provence
- B) Vineyard with Cushion
- C) Phantom Black
- D) Phantom Clear
- E) Sydney White
- F) Conference Padded
- G) Harley Brushed Metal



Also shown:  
Harley Brushed Metal  
Bar Stool

**Sonoma Benches**

- A) 16" x 4' x 18" Tall
- B) 16" x 8' x 18" Tall



**Chiavari Chair Collection**

- A) Gold with Ivory Cushion
- B) Fruitwood with Ivory Cushion
- C) Black with Black Cushion
- D) White with White Cushion
- E) Silver with White Cushion



**1. Choose Your Chair 2. Choose Your Seat**

Select from dozens of Chiavari Style Chairs, Cushions and Colors.  
Visit us at [cortpartyrental.com](http://cortpartyrental.com) to view our full line.



**Mix & Match Colors**

- A) Gold Chair with Gold Velvet Cushion
- B) Gold Chair with Olive Velvet Cushion



**Folding Chairs**

- A) White Resin Padded
- B) Fruitwood Padded
- C) Black Resin Padded
- D) Natural Wood Padded
- E) Polyfold Black
- F) Polyfold White on White
- G) Polyfold Heavy Duty Wide Seat



**Children's Chairs**

- A) Booster Seat
- B) Yellow Stacking Chair
- C) Wood Stacking High Chair

**Bar Stools**

- A) Chameleon Silver with Charcoal Suede Cushion\*
- B) Chameleon Two Tone with White Suede Cushion\*
- \*Multiple Cushion Options Available
- C) Vineyard with Cushion



**Bar Stools**

- D) Chiavari White with White Cushion\*
- E) Chiavari Fruitwood with Ivory Cushion\*
- F) Chiavari Black with Black Cushion\*
- \*Multiple Cushion Cap Options Available
- G) Sydney White
- H) Sydney Black



**Bar Stools**

- I) Fuji with White Cushion
- J) Fuji with Black Cushion
- K) Natural Wood
- L) Harley Brushed Metal

# Sonoma Collection

## Sonoma Table Collection

- A) 2' x 2' Top\*
- B) 2' x 4' Top\*
- C) 2' x 8' Top\*
- D) 4' x 4' Top\*
- E) 4' x 8' Top\*

\*Available Table Heights:  
18", 30" & 42"

A.



B.



C.



D.



E.



Complete the Look with our **Sonoma Bench Seating** and Accent Pillows

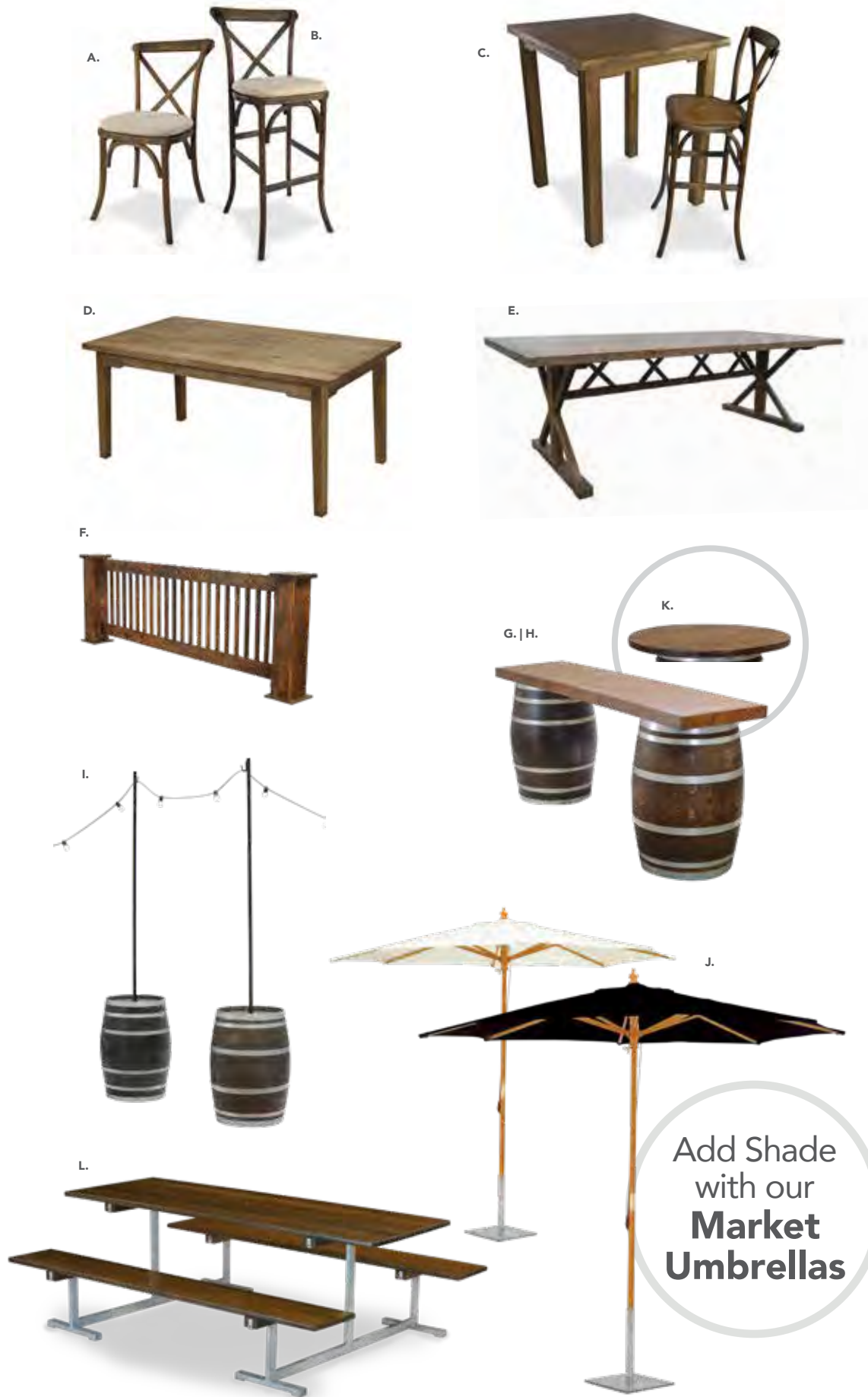
# Vineyard Collection

## Vineyard Collection

- A) Chair with Cushion
- B) Bar Stool with Cushion
- C) Table 36" Square 42" High\*  
\*Shown with Bar Stool
- D) Table 6' x 42"
- E) Table 8' x 48"
- F) Custom Fence
- G) Wine Barrel
- H) Wine Barrel Bar 3 pc
- I) Wine Barrel with Light Pole
- J) Wine Barrel with Market Umbrella\*
- K) Wine Barrel with Table Top 36"

## Picnic Table

- L) Fruitwood 7"\*  
\*Market Umbrella Add-On Item



Add Shade  
with our  
**Market  
Umbrellas**



## Round Tables

### Standard

48" (seats 6-8)  
54" (seats 8-9)  
60" (seats 8-10)  
72" (seats 10-12)

### Plastic Top

60" Round (seats 8-10)



### Cocktail

30" x 42" High (seats 2-4)  
36" x 42" High (seats 2-5)

### Bistro

30" x 29" High (seats 2-4)  
36" x 29" High (seats 2-5)

### Plastic Top

30" x 29" High  
30" x 42" High



### Half Round Tables

30" (seats 1-2)  
60" (seats 4-5)



### Umbrella Tables

A) 48" Table with Vinyl Umbrella 7' (seats 6-8)  
B) 48" Table with Market Umbrella (seats 6-8)  
Available Market Umbrellas:  
C) 9' Round Black  
D) 9' Round Natural  
10' x 10' Square Black  
10' x 10' Square Natural



## Rectangle, Square & Curved Tables

### Standard

4' x 30" (seats 4-6)  
6' x 30" (seats 6-8)  
8' x 30" (seats 8-10)



### Plastic Top / Prep

6' x 30" (seats 6-8)  
8' x 30" (seats 8-10)  
36" Square (seats 4)  
4' x 24" Banquet (seats 4-6)



### Children's Table

6' x 30" (seats 4-6)

### Specialty

8' x 40" (seats 8-10)  
60" Square (seats 8)  
Serpentine  
(96" outer, 48" inner, 30" wide)



### Conference

6' x 18" (seats 3)  
8' x 18" (seats 4)



### Tradeshow & Display

4' x 30" Display Table\*  
6' x 30" Display Table\*  
8' x 30" Display Table\*  
\*Adjust to Standard or Counter Height





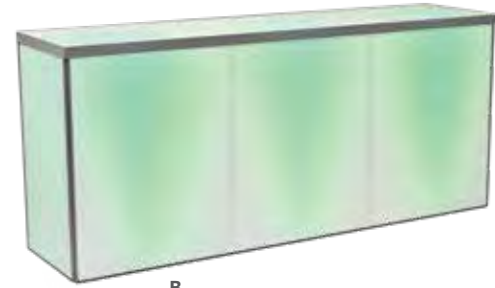
**FURNITURE**  
& ACCESSORIES



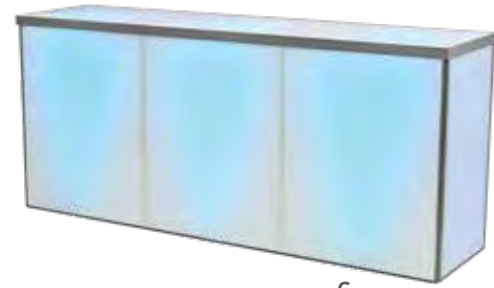
**Avenue Acrylic 8'**  
 A) White Non-Lighted  
 B) Green Lighted\*  
 C) Blue Lighted\*  
 \*Uplight Lighting and  
 Adjustable Work Table  
 Available



# Avenue Bars



B.



C.

**Traditional Bars**  
 A) Wine Barrel Bar 3 Piece  
 B) Sonoma Tasting Bar 8'  
 C) Black/Grey Granite 2 Piece  
 4' & 6' Folding

Also Available:  
 Rectangle Bar Table 2 Piece  
 with Skirt\*  
 6' & 8' Long  
 Serpentine Bar Table 2 Piece  
 with Skirt\*  
 \*Skirts Available:  
 Black, Ivory & White



A.



B.



C.



A.

# Classic Bars



B.

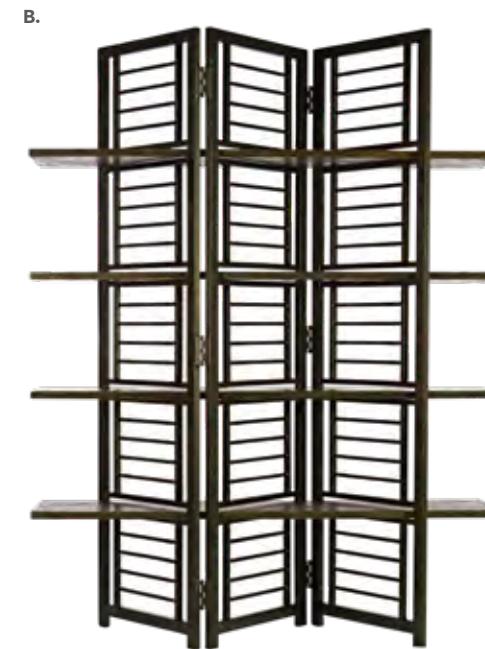


C.

**Classic Bars**  
 A) Classic Black 8'  
 B) Classic White 8'  
 C) Chateau 8'



A.



B.

**Back Bars**  
 A) Heritage Shelf Unit  
 31.5" x 15.75" x 79"  
 B) Winston Shelf Unit  
 65" x 15" x 79"

**Monaco Modular Seating Velvet**

**Lounge Height 16" Tall**  
 A) Loveseat with back  
 B) Chair with back  
 C) Inside Round with back  
 D) Loveseat Ottoman  
 E) Square Ottoman  
 F) Pouf Mini & Biggy

**Dining Height 18" Tall**  
 G) Loveseat with back  
 H) Chair with back  
 I) Inside Round with back  
 J) Loveseat no back  
 K) Chair no back

**Bar Height 30" Tall**  
 L) Loveseat with back  
 M) Chair with back  
 N) Loveseat no back  
 O) Chair no back



A. | G.



B. | H.



D. | J.



E. | K.



F.



L.



N.



O.



A. | G.



C. | I.



D. | J.



E. | K.



F.



M.



N.



O.

**Monaco Modular Seating White**

**Lounge Height 16" Tall**  
 A) Loveseat with back  
 B) Chair with back  
 C) Inside Round with back  
 D) Loveseat Ottoman  
 E) Square Ottoman  
 F) Pouf Mini & Biggy

**Dining Height 18" Tall**  
 G) Loveseat with back  
 H) Chair with back  
 I) Inside Round with back  
 J) Loveseat no back  
 K) Chair no back

**Bar Height 30" Tall**  
 L) Loveseat with back  
 M) Chair with back  
 N) Loveseat no back  
 O) Chair no back

# Modular Seating

Visit [cortpartyrental.com](http://cortpartyrental.com) to see our full line



M.



C. | I.



B. | H.



L.

# Capri

Capri Collection  
Champagne White  
A) Sofa 84"L x 41"D  
B) Chair 33"L x 41"D

Avery Table  
C) Coffee Table 48"L x 26"D



Fringe Rug  
D) Leaf 5' x 7'

Greenery  
E) Bamboo Tree 8'

# Archer

Archer Collection  
Natural Grey  
A) Chair 35"L x 30"D  
B) Sofa 87"L x 30"D

Heritage Table  
C) Coffee Table 55"L x 27.5"D



Vintage Argyle Rug  
D) Blue / Multi 5' x 7'

Greenery  
E) Bamboo Tree 8'

Select Pillows to finalize your Design



# Briza

Briza Collection  
Indoor / Outdoor  
A) Sectional 94"L x 94"D  
B) Ottoman Tray



Include Greenery to complete the Look



Briza Collection  
Indoor / Outdoor  
C) Corner 33"L x 33"D  
D) Sofa 94"L x 33"D  
E) Armless Chair 28"L x 33"D  
F) Loveseat 66"L x 33"D  
G) Club Chair 33"L x 33"D  
H) Ottoman 28"L x 28"D

**Heritage Tables**  
 A) Coffee Table 55"L x 27.5"D  
 B) End Table 20"L x 20"D



**Avery Tables**  
 White  
 A) Coffee Table 48"L x 26"D  
 B) End Table 27"L x 23"D  
 Black  
 C) Coffee Table 48"L x 26"D  
 D) End Table 27"L x 23"D



**Sonoma Tables**  
 A) End Table 24" x 24"  
 B) Coffee Table 24" x 48"  
 C) Coffee Table 48" x 48"  
 \*Available Table Heights: 18", 30" & 42"  
 \*Other Table Tops available



**Sonoma Benches**  
 A) 16" x 8' x 18" Tall  
 B) 16" x 4' x 18" Tall



**Pattern Pillows**  
 A) Cosmic Weave  
 B) Arctic Fur  
 C) Galactic Gold  
 D) Natural Fog  
 E) Natural Sand  
 F) Solar Light  
 G) Vega



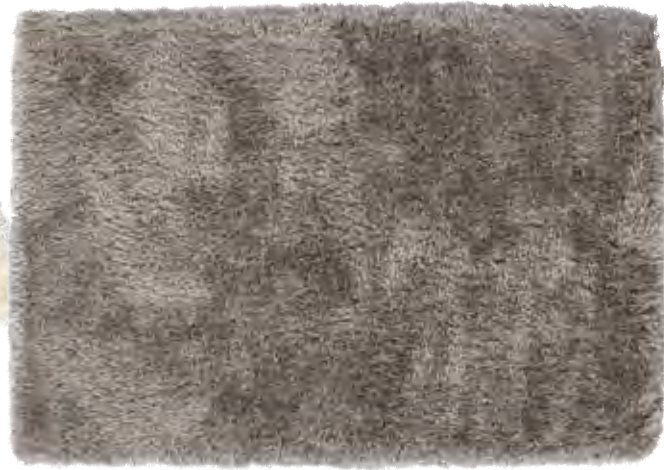
**Solid Pillow**  
 H) Velvet Black  
 I) Velvet Emerald  
 J) Velvet Fern  
 K) Velvet Sapphire  
 L) Velvet Truffle

**Area Rugs  
Plush**  
A) Ivory 5' x 7'  
B) Truffle 5' x 7'



A.

B.



**Fringe**  
C) Leaf 5' x 7'  
D) Stone 5' x 7'

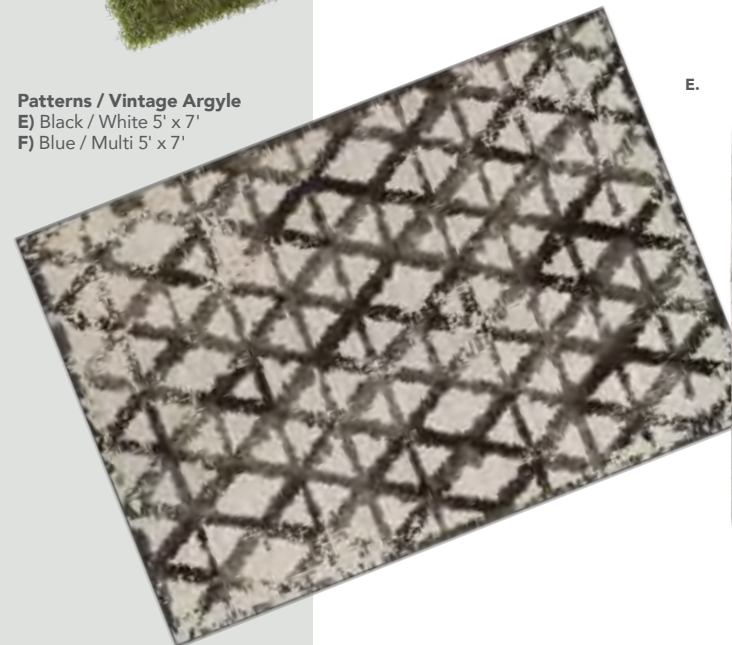


C.

D.



**Patterns / Vintage Argyle**  
E) Black / White 5' x 7'  
F) Blue / Multi 5' x 7'



E.

F.



**Greenery**  
A) Traveler Palm 6'  
B) Bamboo Screen 5.5'  
C) Bamboo Tree 8'  
D) Traveler Palm 8'  
E) Boxwood Hedge 7'



A.

B.

C.

D.



E.

F.

**Room Dividers**  
define your  
Space

**Room Divider**  
F) Heritage Shelf Unit  
31.5" x 15.75" x 79"



**PREP & SERVICE**  
EQUIPMENT

### Cold Beverage Dispensers

- A) 36 Cup with Base
- B) 48 Cup
- Also Available:  
Igloo 5 Gallon

### Bottle Service

- C) Champagne Bucket  
Polished
- D) Champagne Bucket  
Hammered
- Also Available:  
Champagne Bucket Stand

### Hot Beverage Dispensers

- E) 2.5 Gallon
- F) 5 Gallon
- G) Black cover 5 & 10 Gallon
- H) 10 Gallon

### Pitchers

- I) Hammered Stainless 85 oz
- J) Glass 44 oz
- K) Plastic

### Carafes / Decanters

- L) Classic 1 Liter
- M) Modern 1 Liter

### Coffee Makers

- N) Coffee Maker 60 Cup
- O) Coffee Maker 100 Cup

### Coffee Servers

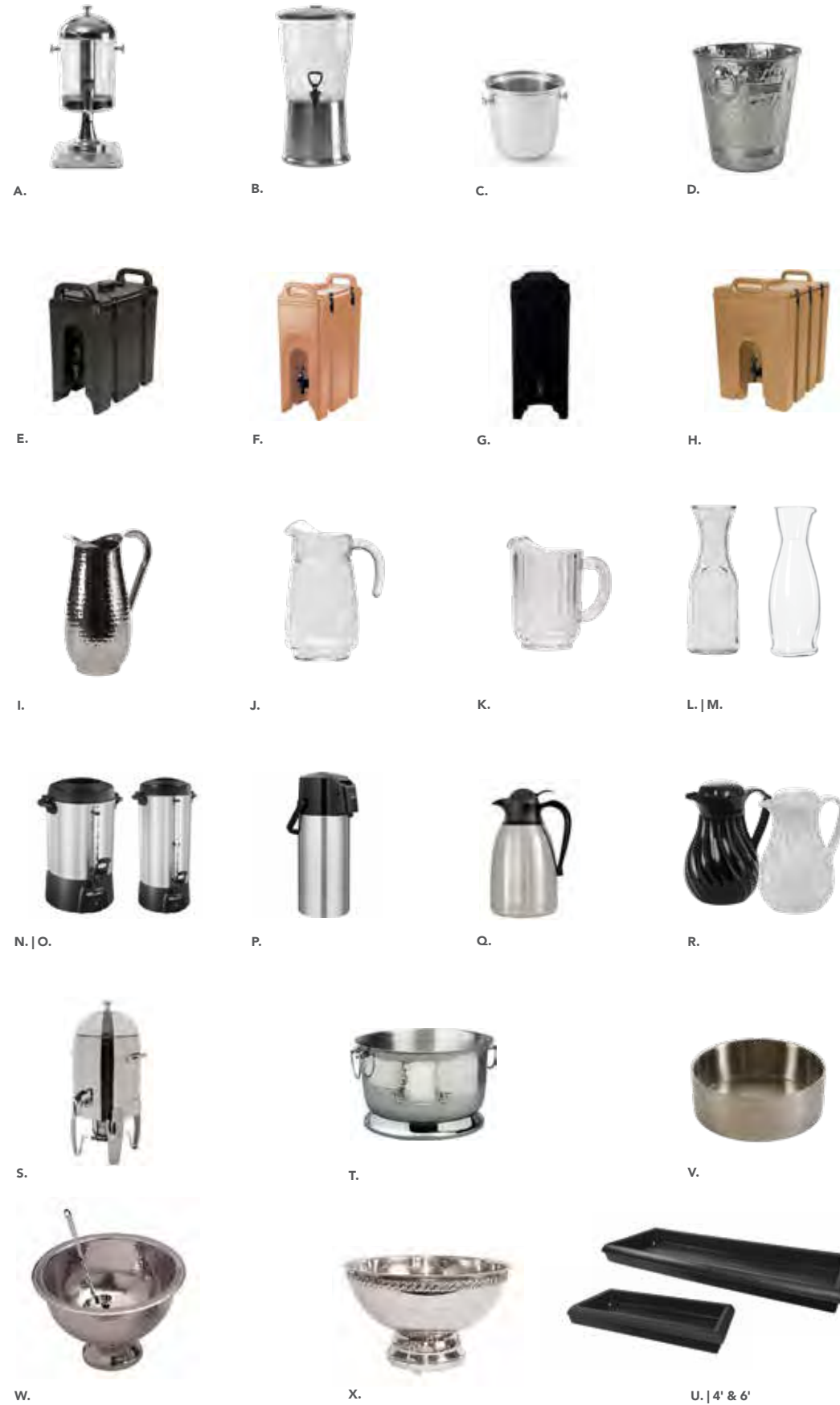
- P) Coffee Pump Pot
- Q) Stainless Thermal 64 oz & 50 oz
- R) Black or White Thermal 42 oz
- S) Stainless Urn 50 Cup\*  
\*Sterno Fuel Required

### Insulated & Double Wall Containers

- T) Beverage Tub 8.5 Gallon
- U) Cold Deck 4' & 6'
- V) Hammered Bowl 10" & 14"
- Also Available:  
Keg Cooler

### Beverage Bowls

- W) Hammered 3 Gallon
- X) Polished 3 & 5 Gallon
- Also Available:  
Beverage Ladle



### Bread Baskets

- A) Black Nest Basket 7" x 5"h
- B) Hammered Black 9" x 6" x 2.25"
- C) Hammered Gold 9" x 6" x 2.25"
- D) Stainless Round
- Also Available:  
Wicker Options

### Salt & Pepper Holders

- E) Hammered Gold Set
- F) Glass Set
- G) Mini Glass Set
- See Also China Collections

### Cream & Sugar Holders

- H) Glass Creamer 7 oz
- I) Glass Sugar 8 oz
- See Also China Collections

### Cake / Plate Stands

- J) Glass Round 13", 10", 8"
- K) Tray Stand Black Metal

### Tiered Display Stands

- L) Lily Pad Bronze
- M) Twig Party Tree Bronze
- N) Cupcake Tree Square 5 Tier
- Also Available:  
Cupcake Tree Round 5 Tier

### Plate Covers

- O) Round Stainless 10.5", 12"
- P) Round Polycarbonate 10.5"
- Q) Square Stainless 10"

### Bus Service

- R) Bus Tub
- S) Waiter Tray Round 14"
- T) Waiter Tray Oval 22" x 27"
- U) Tray Stand & Black Cover
- Also Available: Utility Cart

**Double Wall Bowls**  
 A) Hammered 10" 156 oz  
 B) Hammered 14" 338 oz



A. | B.

**Hammered Bowls**  
 C) Hammered 12" x 2.5"  
 D) Pedestal 10" x 4" with 3" Base  
 E) Fiji 7" x 2.5" 40 oz  
 F) Fiji 9" x 2.75" 67 oz  
 G) Fiji 11" x 3" 126 oz



E.



C.



F.



D.



G.

**Chinaware Bowls**  
 H) Villa Round 9.5" 84 oz  
 I) White Footed 4.5" 9 oz  
 8.75" 72 oz  
 10.25" 111 oz (Shown)  
 J) White Round 9" 28 oz  
 K) White Square 10" 46 oz



H.



I.



J.

**Gondola Bowls**  
 L) White 8.25" 5 oz  
 M) White 12.25" 14 oz



K.



L. | M.



N.

**Plastic Ridged Bowls**  
 N) 12", 18" & 23"



O.



P.



Q.

**White Melamine Bowls**  
 O) Oval 11" x 9"  
 P) Oval Shallow 13" x 11"  
 Q) Pedestal 16"  
 R) Round 10"  
 S) Round 15" x 6"  
 T) Round Ridged 18"  
 U) Sloped 14" & 18"  
 V) Square 7" x 3.25"  
 9.5" x 4"  
 12" x 4.5" (Shown)  
 W) Tokyo 12.5" x 6"



R.



S.



T.

**Versatile** Shapes and Sizes



U.



V.



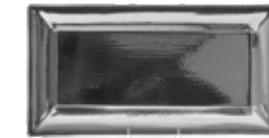
W.



A.



B.



C.



D.



E.



F.



G.



H.



I.



J.



L.



M.



N.



P.

**Hammered Trays**  
 A) Oval 15" x 20"  
 B) Round 18"  
 C) Rectangle 18" x 9"  
 D) Rectangle 16" x 11"  
 E) Square 16"

**Stainless Round Trays**  
 F) 10", 15", 20", 25"

**Chinaware Trays**  
 G) Villa Oval 14"  
 H) White Oval 14"  
 I) White Rectangle 5" x 14"  
 7" x 15"  
 17" x 11" (Shown)

**White Melamine Trays**  
 J) Oval 14" x 10"  
 K) Oval Pebbled 16" x 12"  
 L) Oval 17" x 12"  
 M) Oval 20" x 14"  
 N) Rectangle 17" x 9"  
 19" x 11"  
 22" x 12" (Shown)  
 O) Round Pebbled 14"  
 P) Square 16"  
 Also Available:  
 Charger & Service Plates  
 pages 16-17

**Lightweight** and Stylish



K.

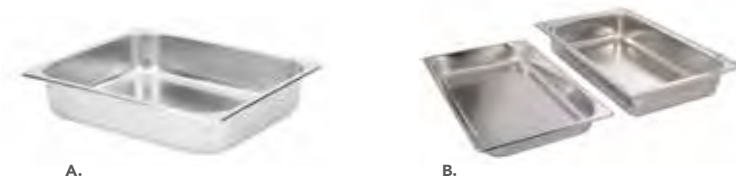


O.



### Display Warmers & Chafing Dishes

- A) Chafer Tray Round 16.5"\*
  - B) Chafer Tray Square 16"\*
  - C) Food Warmer 14" x 7"\*
  - D) Food Warmer 10.5" x 7"\*
  - E) Classic 4 Quart 12" x 10"\*
  - F) Classic 8 Quart 12" x 20"\*
  - G) Deluxe with Gold 4 Quart 12" x 10"\*
  - H) Deluxe with Gold 8 Quart 12" x 20"\*
  - I) Deluxe with Gold 12 Quart (3 Section)\*
  - J) Roll Top 8 Quart 12" x 20"\*
  - K) Soup Chafer 7 Quart\*
  - L) Silver 8 Quart 12" x 20"\*
- \*Sterno Fuel Required



### Food Pans

- A) Half Size 2" or 4" deep 12" x 10"
- B) Full size 2" or 4" deep 12" x 20"

### Sheet Pans

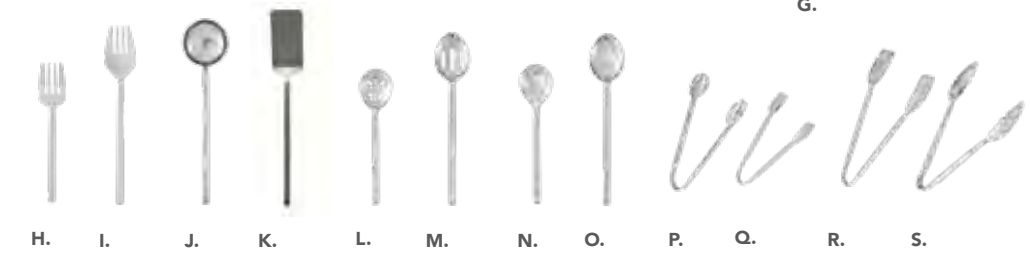
- C) Half Size 18" x 13"
- D) Full Size 18" x 26"

### Stock Pots

- E) 40 Quart with Lid\*
- F) 60 Quart with Lid\*
- G) Strainer / Steamer for Stock Pot \*Strainer Separate

### Fry Pan

- H) Induction 10"



### Gold

- A) Cake Server 11"
- B) Cake Knife 13"
- C) Tong 6.75" & 9.75"

### Polished

- D) Cake Knife 13"
- E) Cake Server 11"

### Hammered

- F) Cake Server 10.75"
- G) Cake Knife 12"
- H) Fork 10"
- I) Fork 13"
- J) Ladle 13"
- K) Spatula 14"
- L) Spoon Pierced 10"
- M) Spoon Slotted 13"
- N) Spoon Solid 10"
- O) Spoon Solid 13"
- P) Tong Crown End 8"
- Q) Tong Flat End 7"
- R) Tong Flat End 9.5"
- S) Tong Scallop End 9.5"

### Ice Service

- A) Claw Tong 7"
- B) Scoop Metal 4 oz
- C) Scoop Plastic 24 oz

### Stainless

- D) Crab Cracker
- E) Fork 10.5"
- F) Ladle for Punch
- G) Ladle for Stock Pot
- H) Pastry or Pie Server
- I) Spoon Slotted 12"
- J) Spoon Solid 11.5"
- K) Tong Utility 10", 12", 16"
- L) Tong Pastry 8"
- M) Tong Scissor 7"
- N) Tong Spoon End 8"
- O) Tong Sugar 4"

**Ovens, Fryers & Cookers**

- A) Convection Oven Double Door\*
  - B) Oven with 6 Burner Range \*
  - C) Convection Oven Tabletop Electric 120v
  - D) Stand for Convection Oven Tabletop
  - E) Cooker Single 3 Ring 60k btu\*
  - F) Cooker Single 30k btu\*
  - G) Cooker Double 30k btu\*
  - H) Deep Fryer 40 lb\*
  - I) Induction Cooktop 1800w 120v
  - J) Sauté Burner Butane Required
- \*Propane Required  
Also Available:  
Induction Fry Pan 10"  
Soup Kettle Electric



A.



B.



C.



D.



E.



F.



G.



H.



I.



J.



A.



B.

# Grills & Griddles

**Grills & Griddles**

- A) Griddle 36"\*
  - B) Grill Charcoal 2' x 5'
  - C) Grill Charcoal 2' x 5' Rotisserie
  - D) Grill 16.5" x 33"\*
  - E) Grill 16.5" x 49"\*
  - F) Grill 24" x 60" Magicater\*
- \*Propane Required  
Also Available:  
Grill Hoods  
Pancake Dispenser



C.



D.



E.



F.

## Warming Ovens

- A) Half Size Electric
- B) Full Size Electric
- C) Mobile Banquet Cabinet Single Door
- D) Mobile Banquet Cabinet Double Door



## Storage & Transport

- E) Hot Box Electric 120v
  - F) Hot Box Non-Electric Single
  - G) Hot Box Dolly 4 Wheel (holds 1 or 2)
  - H) Transport Cabinet Sterno Style\*
  - I) Sheet Pan Rolling Rack
  - J) Sheet Pan Full Size 18" x 26"
  - K) Steam Table 36" (holds 3 food pans)\*
- \*Sterno or Propane Required Also Available:  
Hot Box Non-Electric Double  
Plate Dispenser Electric



## Heat Lamps

- L) Carving Station Deluxe with Board
- M) Double Lamp Modern
- N) Double Lamp Standard
- O) Cutting Board PVC
- P) Cutting Board Wood



## Electric Chillers

- A) Freezer Single Door
- B) Refrigerator Single Door



## Tubs & Holders

- C) Keg Cooler no taps
  - D) Cold Deck 4' & 6'
  - E) Double Wall Tub 8.5 Gallon
  - F) Galvanized Tub 10 Gallon 20"
  - G) Galvanized Tub 100 Gallon 48"
  - H) Ice Caddy on Wheels 125 Pound\*
  - I) Ice Chest Regular
  - J) Ice Chest Large
- \*Ice Available



## Hand Wash & Sinks

- A) Camkiosk Hand Sink Cart 110V
- B) Hand Wash Station Stand Up
- C) Hand Wash Station Table Top\*  
\*Use with 5 Gallon Camtainer & Bucket
- D) Hand Towel Package



## Disposal & Garbage Cans

- E) 7 Gallon
  - F) Slim Jim 23 Gallon
  - G) 32 Gallon
  - H) Recycle Cover\*
  - I) Black Spandex Cover\*
  - J) Garbage Can Wheeled Dolly\*
- \*Use with 32 Gallon



An aerial night photograph of a waterfront event space. In the foreground, a large, multi-decked boat is docked, illuminated with vibrant purple and blue lights. The boat's deck is covered with a large, clear tent structure, and people are visible on board. To the left, a paved walkway leads to a grassy area where several white tents are set up. In the background, a large, brightly lit building with a classical architectural style, featuring columns and a prominent entrance, is visible. The building's facade is illuminated with warm yellow lights. The water in the foreground reflects the colorful lights from the boat and the building. The overall scene is festive and celebratory.

# TENT COLLECTION & ACCESSORIES

## Frame Tent

### Features:

Available in any length and widths of:  
8', 10', 15', 20', 30', 40' and 50'

- Vinyl top and walls are available in white, clear or custom colors
- Gable End or Hip End options available (Hip End shown)
- Standard perimeter 8' leg with other options available
- No center poles
- Secured with stakes or weights

### Accessories:

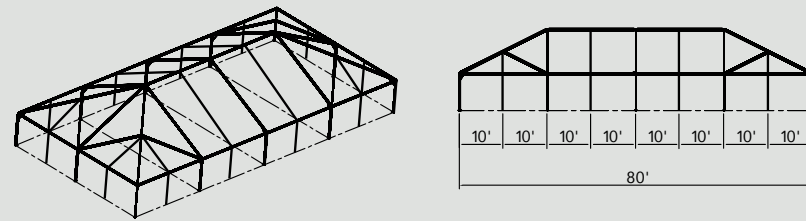
Side Walls  
Leg Drapes  
Pole Covers  
Ceiling Liners  
Doors  
Ballast Covers  
Lighting  
Hanging Clamps  
Flooring  
Carpet  
Custom Entry Systems  
Custom Graphics  
Banner Poles

Our freestanding Frame Tent offers modern-day amenities with a clean simple look. It is constructed of aluminum framing free from center poles with a durable vinyl tent-top covering. Frame tents have an open and airy feel and allow maximum use of interior space. Ideal for any size event including limited or confined spaces such as backyards, decks and patios.



Michele M Waite Photography

8', 10', 15', 20', 30', 40' and 50' Wide



## Clear Top Tent

### Features:

Available in any length and widths of:  
8', 10', 15', 20', 30', 40' and 50'

- Gable End or Hip End options available (Gable End shown)
- Standard perimeter 8' leg with other options available
- No center poles
- Secured with stakes or weights

### Accessories:

Side Walls  
Leg Drapes  
Pole Covers  
Ceiling Liners  
Doors  
Ballast Covers  
Lighting  
Hanging Clamps  
Flooring  
Carpet  
Custom Entry Systems  
Custom Graphics  
Banner Poles

Clear tops are the perfect solution for maintaining the feel of an open space. The clear overhang lets natural light in and allows an unobstructed view of the sky. It's great for clear blue skies, starry nights or even rainy days. No center pole is used, giving the inside an unobstructed and airy space. Clear tops are highly versatile and elegant, making them a great fit for higher-profile events.



Manchik Photography | Sinclair and Moore Events

8', 10', 15', 20', 30', 40' and 50' Wide

Clearspan Option Shown

Visit us at [cortpartyrental.com](http://cortpartyrental.com) or speak to our experienced Event Specialists to discover your tent solutions.

## Tidewater Sailcloth Tent

### Features

- Standard perimeter 8' leg
- Secured with stakes

**20' Wide Tents:** This size is generally used for smaller functions or in conjunction with larger tents. Can be used as bar tents or smaller shade coverings.

20' x 17' (260 square feet)  
20' x 27' (460 square feet)  
20' x 37' (660 square feet)

**44' Wide Tents:** This size is most often used as the focal point for the event for cocktail receptions and as the main dining tent.

44' x 43' (1519 square feet)  
44' x 63' (2413 square feet)  
44' x 83' (3308 square feet)  
44' x 103' (4203 square feet)  
44' x 123' (5098 square feet)

**59' Wide Tents:** This is the largest Tidewater Sailcloth tent that we provide. They can host large events for several hundred guests. The twin pole design allows for a clear space through the center of the tent, perfect for dance floors and other seating arrangements.

59' x 59' (3065 square feet)  
59' x 79' (4238 square feet)  
59' x 99' (5411 square feet)  
59' x 119' (6583 square feet)  
59' x 139' (7756 square feet)

### Accessories:

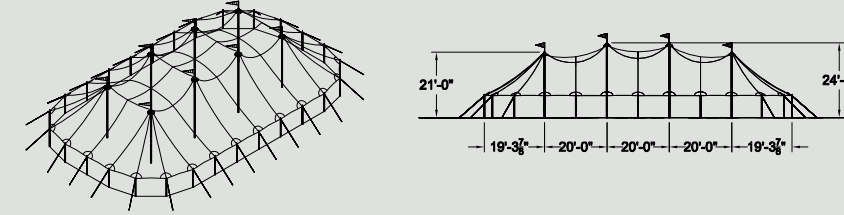
Side Walls  
Lighting  
Flooring  
Carpet  
Custom Décor  
Tidewater Entry System

With elegant lines and magical glow, our Sailcloth Tents provide the perfect setting for your special day. The sculpted peaks and eaves in the translucent fabric enhance daytime events with warm natural light while evening gatherings are given a soft glow. Marry this unique design with specialty flooring, lighting and custom décor for a flawless design.



Belathee Photography | Fleurish

20', 44' and 59' Wide



20', 44' and 59' Wide

Visit us at [cortpartyrental.com](http://cortpartyrental.com) or speak to our experienced Event Specialists to discover your tent solutions.

## Hi Peak Tent

### Features:

Available in widths of:  
10', 15', 20' and 40' Hex

- Longer tents can be created by guttering between the tents
- Vinyl top and walls are available in white or custom colors
- Standard perimeter 8' leg with other options available
- No center poles
- Secured with stakes or weights

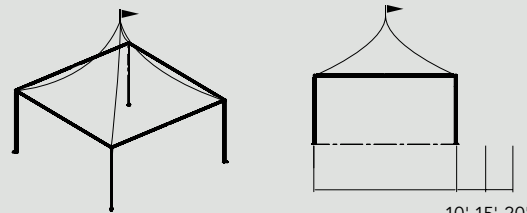
### Accessories:

Side Walls  
Pole Covers  
Ballast Covers  
Lighting  
Flooring  
Carpet  
Banner Poles  
Custom Graphics

The Hi Peak Tent represents structural strength with simplicity of design. The freestanding tents have high swooping peaks and tensioned fabric making them a favorite for any outdoor event.



10', 15', 20' and 40' Wide



10' 15' 20'

## Bandshell Tent

### Features:

Available in widths of:  
20', 30', 40', 50', 66', 82', 100',  
115' and 132'

- No center poles
- Secured with stakes or weights

### Accessories:

Side Walls  
Pole Covers  
Ballast Covers  
Lighting  
Custom Graphics  
Hanging Clamps

If part of your event includes an outdoor performance, then a Bandshell Tent is the right choice for you. This freestanding tent is great for covering concerts, theatres and performance stages. Its style is ideal for providing the audience with maximum visibility and great acoustic quality.



20', 30', 40', 50', 66', 82', 100', 115' and 132' Wide

Visit us at [cortpartyrental.com](http://cortpartyrental.com) or speak to our experienced Event Specialists to discover your tent solutions.

## Pole Tension Tent

### Features:

Available in widths of:  
60', 80' and 100'

- Vinyl top available in white
- Standard perimeter 10' leg
- Interior poles required to support tent
- Guy-lines and stakes around perimeter of tent

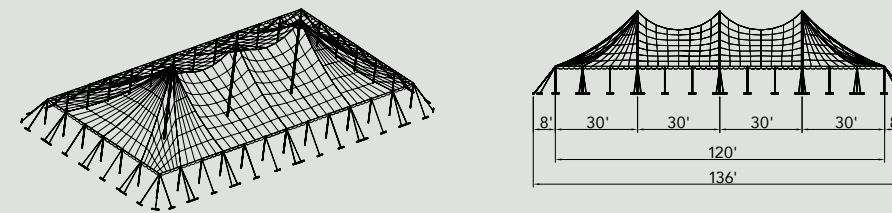
### Accessories:

Side Walls  
Leg Drapes and Center Pole Covers  
Doors  
Lighting  
Flooring  
Carpet  
Banner Poles  
Custom Graphics

Tension Tents create a dramatic design featuring high sculpted peaks with a gracefully curved architectural shape. They are installed using center and side poles throughout the structure with tie downs extending out from the tent for additional support. Ideal for large scale events such as weddings, festivals, galas, graduations and company events.



60', 80' and 100' Wide



Our Clearspan Tent is a fully engineered temporary structure with unobstructed interior space, advanced wall system, and a straight clean exterior appearance. The keder track installed roof fabric and sidewall provide weather tight covering without lace lines or rain flaps. Clearspan structures feature a contemporary style and offer the maximum amount of usable interior space. They are available with many accessories such as: porches, interior gables, open gables, clear roof panels, clear gables, flooring, and double French doors. They are ideal for short term and long term applications such as: weddings, large corporate events, concerts, sporting events, social events, industrial warehousing and more. The interior framework offers unlimited options for lighting, sound and décor with rigging and attachment points.

## Clearspan Structure Tent

### Features:

Available in any length and widths of:  
15m (50')  
20m (66')  
25m (82')  
30m (100')  
35m (116')  
40m (132')  
50m (165')

- Vinyl top and walls are available in white or clear
- Custom vinyl and wall options available in leg heights from 10'-17'
- No center poles
- Secured with stakes or ballasted weights

### Accessories:

Side Walls  
Ceiling Liners  
Doors and Custom Entrances  
Beam Clamp Rigging  
Ballast Covers  
Lighting  
Flooring  
Carpet  
Custom Graphics



50', 66', 82', 100', 116', 132', and 165' Wide

Visit us at [cortpartyrental.com](http://cortpartyrental.com) or speak to our experienced Event Specialists to discover your tent solutions.

## Chandeliers

- A) Majestic 27" 13 Light\*
  - B) Majestic 48" 25 Light\*
  - C) Gatsby 27" 6 Light\*
  - D) Gatsby 35" 12 Light\*
  - E) Gatsby 43" 18 Light\*
  - F) Crystal Sphere 18"\*
  - G) Crystal Sphere 24"\*
  - H) Marionette 34" 8 Light\*
  - I) Chateau 41" 8 Light\*
  - J) Marlow 24" 6 Light\*
  - K) Marlow 40" 12 Light\*
- \*Power Required



**Illuminate**  
your tent  
in Style

## Chandeliers

- L) Edison 5 Light\*
  - M) Edison 9 Light\*
  - N) Silver 2 Tier 6 Light\*
  - O) Silver 3 Tier 15 Light\*
  - P) Rustique 5 Light\*
  - Q) Rustique 9 Light\*
  - R) Napoleon 4 Light\*
  - S) White Flower 19.5"\*
  - T) White Flower 25.75"\*
  - U) White 4 Globe\*
  - V) White 5 Globe\*
- \*Power Required



**Light Posts**

- A) Cedar Box with Light Post, Café Light String\*
- B) Cedar Box with Light Post & Cover, Café Light String\*

**Light Strings**

- C) Black Café\*
  - D) Black Café Drop Style\*
  - E) White Café\*
  - F) White Café Drop Style\*
- \*Power Required



**Floor Stands**

- A) Light Tower LED\*  
Extends to 20'  
\*Power or Gas Required
- B) Airstar Crystal Balloon  
Light 1800w\*
- C) Globug 400w Light on Tripod\*
- D) Lamp Post Single Globe\*  
\*Power Required



**Airstar Lighting:**

- 5' Globe Air-Inflated
- Light up to 10k square foot area
- Hang globe under tent
- Freestanding base option
- Adjustable height 10'-16'

# Marquee Lighting



**Letters**

- A, B, C, D, E, F, H, I, J, K, L, M, N, O, P, R, S, T, U, V, X, Y

**Symbols & Numbers**

- #, &, 0, 1

**Industrial & Uplights**

- A) LED Par Can 64,  
Floor or Clamp\*  
Also Available:  
LED Hi Bay  
\*Power Required

**Available Accessories:**

- Dimmer, 2000 Watt
- Dimmer, LED
- Extension Cords, Multiple

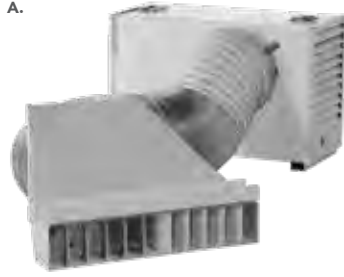




## Tent Heaters

- A) 80k btu with Diffuser\*
- B) 170k btu with Diffuser\*  
\*Duct optional, Propane & Power Required
- C) 500k btu Indirect Fired Diesel\*  
\*Duct, Diesel & Power Required
- D) Salamander Heater 240v Single Phase\*\*  
\*Power Required  
\*\*Electrician Required
- E) Instaheat Radiant Heater Mount 1500w 120v\*  
\*Power Required

A.



B.



C.



D.



E.



## Warmth and Comfort

Indirect Fired Heating 100% clean, dry heat with no open flame

## Patio Heaters

- F) Flame Style Bronze 7'10"\*\*
- G) Zubri with Skirt 7'\*
- \*Propane Required

F.



G.



(Tent Heater, Shown with Duct and Diffuser)

## Cooling & Misting Fans

- A) Waycool Evaporative Cooler\*
- B) Versafog Misting Fan Satellite 30\*\*
- C) Versafog Misting Fan Pump 30\*\*
- D) Versamist Misting Fan 18\*\*
- E) Pedestal Floor Fan 24\*\*
- F) Tent Mount Barrel Fan 12\*\*  
\*Water Source and/or Power Required

A.



B.



C.



D.



E.



F.



## Lightweight Pop-Up Cover

- A) Pop-Up Style Tent 10' x 10'
- 10' x 20'

A.



B.



C.



## Market Umbrella

- Available Styles:
- B) 9' Black
- C) 9' Natural
- 10' x 10' Square Black
- 10' x 10' Square Natural

**Generators**

- A) Super Quiet 2000w
- B) Super Quiet 6500w

# Power Up with Confidence



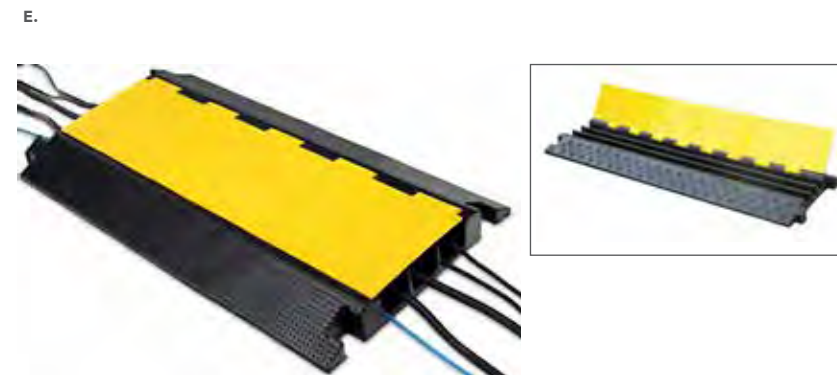
**Distribution**

- A) Mini Distribution Box 30 amp  
Indoor Only 4 - 20 amp outlets
- B) Mini Distribution Box 30 amp  
4 - 20 amp outlets
- C) Distribution Box 50 amp  
6 - 20 amp outlets
- D) Distribution Panel 200 amp  
6 - 50 amp outlets

# Power Connection

**Power Cords**

- A) Camlock Feeder Cable Set, 25'
- B) 30 amp 50'
- C) 50 amp 50'
- D) 50 amp 100'

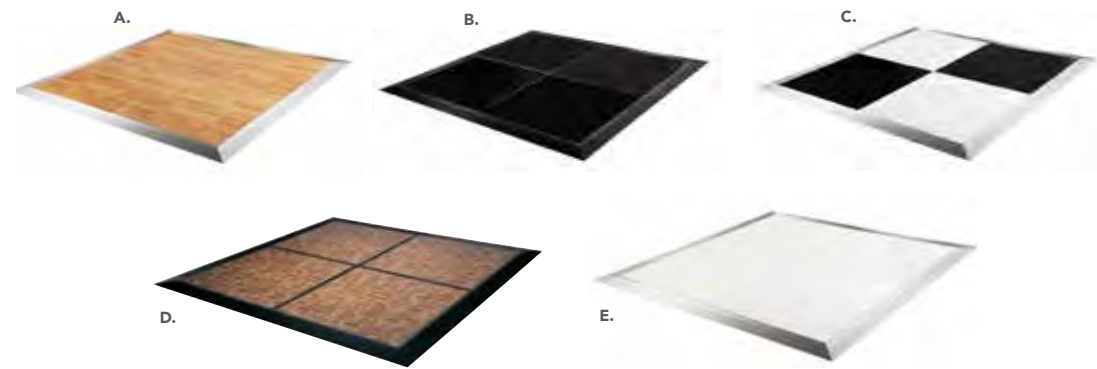


**Accessories**

- E) Cable Ramp, 3'
- F) Extension Cords  
10 & 12 gauge

### Dance Floors

- A) 4' x 4' Birch\*
  - B) 4' x 4' Black\*
  - C) 4' x 4' Black & White\*
  - D) 4' x 4' Walnut\*
  - E) 4' x 4' White\*
- \*Installed



## Performance Stages

Staging can provide an important focal point at any event, whether it's for a wedding, gala, band, auction, fashion show, or presentation. With modular stage pieces to work with, CORT Party Rental can not only manage a multitude of sizes and heights, but also provide rounded and corner stage sections to meet your staging needs and maximize the available room space.



### Stage Top Styles

- A) Stage 4' x 4' Indoor / Outdoor\*
  - B) Stage 4' x 4' Indoor \*
  - C) Stage 4' x 8' Indoor \*
- \*Installed

### Floor Components

- D) Adjustable Stage Legs
  - E) Stair Unit 12" - 18"
  - F) Stair Unit 18" - 36"
  - G) Stair Unit 24" - 48"
  - H) Stage Rail Horizontal 4' Section
  - I) Stage Rail Vertical 4' Section
  - J) Stage Skirting 8' in length (1', 2' or 3' height)
- Also Available:  
 Stage Corner Section  
 Stage Round Section  
 Stage Ramp  
 Stair Unit Custom Height



## Engineered Tent Flooring

Installing a floor system will dramatically improve the usable space available on your property or venue, regardless of the obstacles we commonly see on-site. CORT Party Rental has the experience, resources and know-how to erect sub-flooring over gardens, pools, decks, uneven terrain or wet ground. Whatever gets in our way, we have it covered!

Professional flooring can make your temporary venue feel both permanent and complete. With options ranging from plastic lay down floor to custom sub-floor construction and fully leveled decking. Any backyard, parking lot or open area can be transformed into a stunning venue. Once the floor is installed, we can add steps, ramps, guardrails and other safety measures to keep your guest flowing smoothly throughout your event. Pair flooring options with turf, carpet or other stylish covers to complete your look.

### Floor Systems

#### Gridmat Light Duty Plastic Laydown Flooring

- This natural turf protection system can be used for tent floors, walkways, patios, outside displays and athletic field covers.

#### Sur-Loc / Dura-Trac Medium Duty Plastic Laydown Flooring

- Whether your surface is flat or a little uneven, Dura-Trac creates a safe, professional surface for a successful event.

#### I-Trac Heavy Duty Plastic Panel Laydown Flooring

- Used on a wide range of applications from access roads for heavy vehicles or equipment to helicopter pads and loading dock areas.

#### Plywood Laydown Subfloor

- Ideal when needing a solid floor that can transition with your ground. Can be set on a flat or slightly uneven surface.

#### Elevated and Engineered Flooring

- Our elevated flooring options are ideal for rolling landscapes or slopes. Can be installed with grade changes up to 15'.

### Pool Cover Decks

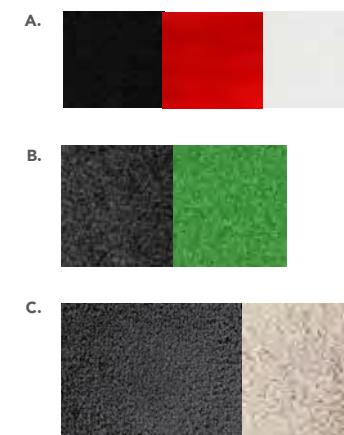
A CORT Party Rental pool cover will transform your pool area into a unique and functional atmosphere suitable for a variety of uses.

### Roadways, Loading Areas and Paths

CORT Party Rental provides effective solutions for temporary roadways, construction jobsites, tent entrances and stadium events with products that are cost effective and environmentally friendly.

## Floor Cover

CORT Party Rental can provide you with the perfect floor covering for your next event. Choose from multiple colors and styles to fit all your flooring needs.



### Carpet & Turf

- A) Carpet Runners  
Available in Black, Red & White
- B) Turf  
Available in Black & Green  
Custom Colors Available
- C) Carpet Installed  
Available in Black & Beige

### Wood & Vinyl

- D) Urban Safari
- E) Cascade Pine  
Custom Colors Available



**CONVENTION**  
& CROWD CONTROL

**Audio Visual**

- A) Bull Horn Megaphone
  - B) Floor Podium No Sound
  - C) Tabletop Podium with Microphone
  - D) Floor Podium with Microphone 2 pc
  - E) Portable Sound System Fender
  - F) Professional Sound System Yamaha
  - G) Wireless Handheld Microphone with Receiver
  - H) Wireless Lapel Microphone with Receiver
- Also Available:  
Extension Cords  
Flat Screen TV



# Truss & Fencing



**Truss System**

- A) Goal Post 10' x 10' 10' x 20'
- B) Booth 10' x 20' x 10' 10' x 30' x 10'

**Fencing**

- A) Galvanized 42" x 7.5'
- B) Vineyard Custom
- C) White PVC Premium 42" x 6'

**Miscellaneous**

- A) Easel Aluminum
- B) Easel Chrome
- C) Garment Rack, Rolling
- D) Garment Hangers Heavy Chrome
- E) Coat Checks per 100



**Disposal**

- A) Garbage Can 7 Gal
- B) Garbage Can Slim Jim 23 Gal
- C) Garbage Can 32 Gal
- D) Black Cover for 32 Gallon Garbage Can
- E) Recycle Cover for 32 Gallon Garbage Can



## Stanchion

- A) Chrome Stanchion
  - B) Stanchion Rope Black or Red\*
  - C) Retractable Belt\*
  - D) Sign Holder 8.5" x 11"\*
  - E) Sign Holder 22" x 28"\*
  - F) White Plastic Stanchion\*\*
  - G) White Plastic Stanchion Chain\*\*
  - H) Traffic Cones
- \*Use with Chrome Stanchion  
\*\*Also Available in Black



## Pipe & Drape

- A) 8' Tall Section with Table & Tradeshow Skirt
  - B) 8' Tall Sections & 3' sides
- Also Available:  
Banjo Fabric Table Skirts  
Rubber Base Weights

Hardware available in the following heights  
3', 8', 12', 16' & 20'

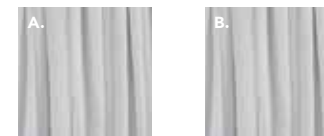


Visit [cortpartyrental.com](http://cortpartyrental.com) to view our full line of Pipe & Drape options



Alante Photography

## SHEER DRAPE



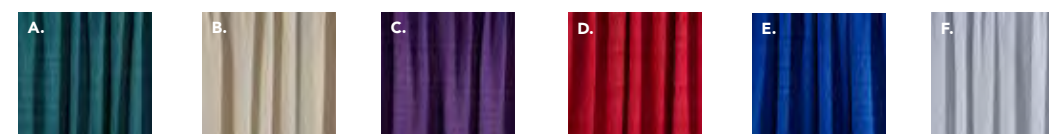
## VELOUR DRAPE



## PREMIER DRAPE



## TRADESHOW BANJO DRAPE



## Sheer Drape

- A) Voile Natural
- B) Voile White

## Velour Drape

- A) Black
- B) Grey
- C) Royal Blue
- D) White

## Premier Drape

- A) Black
- B) Royal Blue
- C) Ivory
- D) White

## Tradeshow Banjo Drape

- A) Hunter Green
  - B) Ivory
  - C) Purple
  - D) Red
  - E) Royal Blue
  - F) White
- Also Available in Tradeshow Skirts

Visit [cortpartyrental.com](http://cortpartyrental.com) to view our full line of Pipe & Drape options

# COMPLETE CUSTOMER Tent Services

CORT  
PARTY RENTAL



Michele M Waite Photography

At CORT Party Rental, our state-of-the-art facility is dedicated to cleaning, maintaining, repairing and manufacturing all things tents. By having our own washing and drying facility, CORT Party Rental tents are guaranteed to be the whitest and brightest every time. It also gives us the capacity to service our **customers who own their own tents**. Our services include purchasing tents and accessories, installation, on-site maintenance, removal, repair, cleaning and storage of customer owned tents.

To see more tenting options and our complete line of products, visit us online at [cortpartyrental.com](http://cortpartyrental.com) or call us today.

STAY CONNECTED      



Tents for Sale, New & Used



Custom Tent Design



Tent Installation



Custom Graphics



Tent Cleaning & Prep



Tent Storage

**Table Linens**

Add color, texture and an impact at your event. The following guide will assist in finding the perfect fit.

Linen	90" Round	108" Round	120" Round	132" Round	60" x 120"	90" x 108"	90" x 132"	90" x 156"	100" x 156"	80" - 90" Square	120" Square
30" Round	To the Floor	Tuck 9"	Tuck 15"								
30" Round Stand-Up	30" Drop	39" Drop	Tuck 3"	Tuck 9" or Tie						Overlay	
36" Round	27" Drop	Tuck 6"	Tuck 12"	Tuck 18"							
36" Round Stand-Up	27" Drop	36" Drop	To the Floor	Tuck 6" or Tie						Overlay	
48" Round	21" Drop	To the Floor	Tuck 6"	Tuck 12"						Overlay	
54" Round	18" Drop	27" Drop	Tuck 3"	Tuck 9"						Overlay	
60" Round	15" Drop	24" Drop	To the Floor	Tuck 6"						Overlay	
72" Round	9" Drop	18" Drop	24" Drop	To the Floor						Overlay	
4' x 30" Banquet					15" Sides Tuck Ends	To the Floor	30" Sides Tuck Ends	30" Sides Tuck Ends	Tuck All Sides	Overlay	
6' x 30" Banquet					15" Sides 24" Ends	30" Sides 18" Ends	To the Floor	30" Sides Tuck Ends	Tuck All Sides	Overlay	
8' x 30" Banquet					15" Sides 12" Ends	30" Sides 6" Ends	30" Sides 18" Ends	To the Floor	Tuck All Sides	Overlay	
8' x 40" Banquet					10" Sides 12" Ends	25" Sides 6" Ends	25" Sides 18" Ends	25" Sides 30" Ends	To The Floor	Overlay	
60" x 60" Square										Overlay	To The Floor
6' x 18" Conference					Customize		Tuck Sides 30" Ends			Overlay	
8' x 18" Conference					Customize		Tuck Sides 30" Ends			Overlay	

To view all of our table options please refer to pages 54-59, visit our website [www.cortpartyrental.com](http://www.cortpartyrental.com) or speak with one of our Event Specialists for assistance in meeting your specific event needs.

**Savvy Tips**

- Table runners add style and texture to a table, so get creative and have fun layering!
- For linens longer than your selected table size, simply "tuck" the additional fabric underneath for a finished look.
- Add a table pad prior to laying out your linen for a polished presentation.
- When planning an outdoor event, consider a linen that sits slightly above the ground to avoid getting the linen wet or dirty prior to guests arriving.
- Linen for stand-up tables may benefit from being tied with a sash. You will want to order a longer linen in this case as cinching shortens the length.

**Linen Care and Handling**

- When using candles please remember to snuff, not blow the candles out to avoid permanent wax damage. Candles should always be in a candle holder to prevent heat damage to the linen. We have many stylish candle holder options to choose from on pages 30-31.
- Our specialized team takes care of all laundering for your convenience. Simply shake the used linens off to remove any debris and place them in the linen bags provided. Damp linens should be air dried prior to placing in linen bags to eliminate potential damage to the fabric.

**Dance Floor**

Dance floors create a focal point and anticipation for what the evening will bring. The following will help you find the right size floor for your dancing guests.

<b>Dance Floor Size</b>	12' x 12'	12' x 16'	12' x 20'	12' x 24'	12' x 28'
<b>Number of Guests</b>	32	43	54	64	75
<b>Dance Floor Size</b>	16' x 16'	16' x 20'	16' x 24'	16' x 28'	16' x 32'
<b>Number of Guests</b>	57	71	86	100	114
<b>Dance Floor Size</b>	20' x 20'	20' x 24'	20' x 28'	20' x 32'	20' x 36'
<b>Number of Guests</b>	89	107	125	142	160
<b>Dance Floor Size</b>	24' x 24'	24' x 28'	24' x 32'	24' x 36'	24' x 40'
<b>Number of Guests</b>	128	150	170	192	214

**Dance Floor Care and Handling**

- Dance floors need to be covered and protected from the elements of weather.
- Limiting the amount of time the dance floor is on grass is best to protect the lawn from damage.
- The dance floor area should not be watered 24-48 hours prior to installation and sprinkler systems should be turned off until the dance floor is removed.
- The install area under the dance floor must be flat and open.
- A subfloor may be needed if a dance floor is going on dirt or gravel as well as under a tent when rain is anticipated.

The basic rule when determining your dance floor size is that usually 50% of your guests will be on the dance floor at any given time and to allow 9 square feet per couple or 4.5 square feet per person.

For additional sizes and configurations please speak with one of our Event Specialists for assistance in meeting your specific flooring needs.

To view dance floor styles, please see page 98.

**Performance Stage**

There are multiple configurations available to accommodate stage needs for your next event. Please consult with your entertainment professional for their specific requirements and use the below as a general guide when planning.

<b>Stage Size</b>	8' x 12'	12' x 20'	12' x 24'	16' x 28'	24' x 24'
<b>Band Size</b>	3-Piece Band	5-Piece Band	7-Piece Band	12-Piece Band	12-Piece with Piano

Please visit our website [www.cortpartyrental.com](http://www.cortpartyrental.com) or speak to one of our knowledgeable Event Specialists for options to customize and dress up your stage.



Create your event space with one of our versatile tent styles. Our wide range of options and services allow you to design your unique space and let us handle the rest. Here are a couple of steps to consider during your exploration:

**Step 1**

Determine the clear open space available to host your event. All tents need to be secured by stakes or weights along with walkway access for guests. Measure the flat open area free from shrubs, trees, overhanging branches, fencing or other obstacles. The open width and length will help to determine the maximum size tent and style available to suit your vision.

**Step 2**

Select seating accommodations for your guests and establish your maximum guest count. This will determine the space required for guest seating.

<b>Cocktail Standing Only</b>	6-8 square feet per guest*
<b>Ceremony / Theater Seating with Aisle</b>	8-10 square feet per guest*
<b>Classroom Seating</b>	8-10 square feet per guest*
<b>Banquet Seating Rectangle Tables</b>	10-14 square feet per guest*
<b>Banquet Seating Round Tables</b>	10-14 square feet per guest*
<b>Banquet Event (All-Encompassing)</b>	20 square feet per guest*

\*Estimated Industry Standard

**Step 3**

Calculate additional elements and activities that will require square footage. Check with your professional vendors (catering, DJ, band and other entertainers) to obtain actual space requirements.

<b>Primary Table</b>	100 square feet*
<b>DJ or Cake</b>	100 square feet*
<b>Buffet Table</b>	200 square feet*
<b>Bar Area</b>	200 square feet*
<b>Dance Floor</b>	Total square feet plus 25%*
<b>Stage</b>	Total square feet plus 25%*

\*Estimated Industry Standard

**Step 4**

Gather the total square footage from the steps above and compare this total to your measurements in step 1. View our Tent Size Chart on page 111 to locate the recommended tent size.

**Step 5**

We are here for you! Let us help design, plan and elevate your event.

Guests	Theater Row Seating 8-10 square feet per guest		Cocktail Party 12-15 square feet per guest		Banquet Event 20 square feet per guest	
	square feet	space	square feet	space	square feet	space
20	200	10x20	300	15x20	400	20x20
40	400	20x20	600	20x30	800	20x40
60	600	20x30	900	30x30	1200	30x40
80	800	20x40	1200	30x40	1600	40x40
100	1000	20x50	1500	30x50	2000	40x50
120	1200	30x40	1800	30x60	2400	40x60
140	1400	30x50	2100	30x70	2800	40x70
160	1600	40x40	2400	40x60	3200	40x80
180	1800	30x60	2700	30x90	3600	40x90
200	2000	40x50	3000	30x100	4000	50x80
220	2200	30x75	3300	40x80	4400	50x90
240	2400	40x60	3600	40x90	4800	50x100
260	2600	50x50	3900	40x100	5200	50x105
280	2800	40x70	4200	50x80	5600	50x110
300	3000	50x60	4500	50x90	6000	50x120
350	3500	50x70	5250	50x100	7000	66x115
400	4000	50x80	6000	50x120	8000	82x100
450	4500	50x90	6750	66x100	9000	82x115
500	5000	50x100	7500	66x115	10000	100x100

**Tent Sizes**

The above includes the closest tent size for the number of guests listed with many other options available. Our Event Specialists will help determine the perfect size for your event.

**Lighting & Power**

Enhance your event space with our chandeliers and other lighting options. We offer multiple statement-making designs as well as standard options for back end staff areas. Explore our power and power distribution options to ensure a seamless experience.

**Site Inspections**

Ask our Tent Experts! We will meet you at your event site to discuss best options to execute your vision. With your design in mind, we review access, obstructions and measure all areas to maximize your opportunities. Remember to have all underground utilities clearly marked the day prior to installation of the tent.

**Tent Permits**

Tent permit and safety requirements vary by city. We work closely with local government agencies to ensure specific requirements are met. Permit documentation requires area and floor plans, must be applied for in advance and will include additional fees.

**Reserve Early**

As your partner, we are committed to providing the highest level of products and services each step of the way. Confirming your order early will increase product availability, delivery options available and allow adequate time for you to review all products and details on your contract for accuracy. Contract information confirmed accurate by you is the sole form of communication to reflect your specific details and overall vision.

**Policies & Information:**

Please visit us at [cortpartyrental.com](http://cortpartyrental.com) to get all the latest products and information when planning your next event with us.



For inspiration and showroom locations  
call 877.939.RENT or visit us at [cortpartyrental.com](http://cortpartyrental.com)

© 2019 CORT. A Berkshire Hathaway Company.